

**This document contains:**

- The Event Covid-19 risk assessment and risk mitigation plan in accordance with the [FEI Policy for Enhanced Competition Safety during the Covid-19 Pandemic](#)
- The Event Approved Schedule

Given the current covid-19 situation, please note that the FEI's approval of a Schedule should not be taken as an absolute guarantee that the Event will definitely go ahead. The decision whether the Event can take place must be made by the OC and NF in close consultation with the applicable domestic government and public health authorities. It is the responsibility of each Participant to check the status of the Event prior to planning his/her travel to the Event.

# Guidance for the use of the WHO Risk Assessment tools in the context of COVID-19 - FEI version

Guidance for FEI Event organisers ("OCs") during the current outbreak of COVID-19

In view of the current outbreak of COVID-19, this disease-specific and event-specific risk assessment and mitigation checklist has been developed by WHO for use by host countries and event organizers, to assess the specific risk of COVID-19.

The FEI has slightly adapted the wording in the document, mainly by replacing the initial term "mass gathering sporting event" by "FEI Event". Under the FEI Policy for Enhanced Competition Safety during the Covid-19 Pandemic, which applies to all FEI Events taking place after 1 July 2020, all OCs of FEI Events must carry out a risk assessment of their Event in terms of Covid-19 transmission, using the present document.

The following risk assessment and mitigation checklist should be used in conjunction with the "WHO Mass Gathering Sports Addendum Guidelines" - OCs should consider the term "mass gathering" in it as synonym of "FEI Event" in this context.

In order to accurately provide answers the following risk assessment and mitigation checklist, OCs must be knowledgeable on the current COVID-19 outbreak. OCs should reference the daily global COVID-19 situation reports provided by WHO as well as the national COVID-19 situation reports, if available.

The tool must be completed in this Excel spreadsheet (see following tabs), as the scores are automatically calculated there. Once the tool is completed, the scores received in the Excel spreadsheet for both sections will appear in the decision matrix found on the final tab ("Overall risk scores") for the Event's overall risk score to be determined.

It must be ensured that this risk assessment is conducted with input from local public health authorities and that the necessary personnel with expertise in mass gatherings, risk assessment, epidemiology, and infectious disease control measures are included from the initial stages of planning.

For the final determination, factors under consideration include:

- the current stage of the COVID-19 outbreak and known transmission dynamics
- the geographical distribution and number of participants, and their individual risk profile
- the risk assessment tool
- the mitigation measures that are currently in place or feasible and any discipline-specific guidance issued by the FEI.

*It is important to remember that while mitigation measures can reduce the risk of COVID-19 infections, they cannot completely eliminate the threat. It is WHO's view that all countries with community transmission should seriously consider postponing or reducing sport events that bring people together and have the potential to amplify disease, and support the recommended best practice of physical distancing. Any decision will be supported through the use of WHO tools, in particular this risk assessment tool.*

*If movement restrictions and further national measures have been established in the country, the risk assessment does not apply.*

*However, when the process of re-opening/conducting mass gatherings is being considered post movement restrictions, it will be key to ensure any decisions are based on a risk assessment, such as the WHO Mass gatherings COVID-19 risk assessment.*

## Risk assessment for COVID-19

*The questions below will enable OCs to review the additional considerations specific to sports, and thus inform their risk assessment of COVID-19 associated with their Event. This will help OCs understand and manage any additional risk from COVID-19.*

*The risk assessment should be reviewed and reassessed regularly during the planning phase and updated immediately prior to the transition to the operational phase, especially in light of the rapidly evolving nature of the outbreak. Reference should be made to the latest technical guidance and situation reports on the WHO website.*

*The risk assessment for COVID-19 associated with the Event must be coordinated and integrated with the host country's national risk assessment for COVID-19. The person completing the questionnaire should include input from the local public health authorities, consult WHO's latest technical guidance and ensure that there is an up-to-date evaluation of the epidemiological situation.*

**Please answer Yes (1) or No (0) to the following questions to determine a risk assessment score that incorporates factors specific to sporting events**

| <b>Additional risk of COVID-19 to the sporting event</b>  | <b>Yes (1)/No (0)</b> | <b>Score</b> |
|---|-----------------------|--------------|
| <b>Will the event be held in a country that has documented active local transmission of COVID-19 (community spread)?</b>  | 1                     | 1            |
| <b>Will the event be held in a single venue or multiple venues/cities/countries?</b><br><i>(single venue = 0; multiple venues = 1)</i>  | 0                     | 0            |
| <b>Will the event include international participants (athletes and spectators) from countries that have documented active local transmission of COVID-19 (community spread)?</b> <i>(NB: if the Events does not involve spectators, please clarify this in the comments to the questions in relation to spectators in the "Mitigation Checklist" sheet)</i> | 1                     | 1            |
| <b>Will the event include a significant number of participants (athletes or spectators) at higher risk of severe COVID-19 disease (e.g., people over 65 years of age or people with underlying health conditions)?</b>  | 0                     | 0            |
| <b>Will the event include sports that are considered at higher risk of spread for COVID-19 (eg, contact sports)?</b>  | 0                     | 0            |
| <b>Will the event be held indoors?</b><br><i>(Yes = 1; No = 0)</i>  | 0                     | 0            |
| <b>Total COVID-19 risk score</b>  |                       | <b>2</b>     |

## Mitigation checklist for COVID-19

Mitigation measures assess the current effort and planning to reduce the risk of spread of COVID-19 disease for the event. As mitigation measures can reduce the overall risk of the sporting event contributing to the spread of COVID-19, they should be taken into account after the risk assessment has occurred to gain a clearer understanding of the overall risk of transmission and further spread of COVID-19, should the event be held. Together with the risk assessment score, the mitigation measure will contribute to the decision matrix and influence the assessment of the overall risk of transmission and further spread of COVID-19 in relation to the event.

| Topic   | Key consideration  | Score<br>Yes/Completed (2),<br>Maybe/In progress (1),<br>No/Not considered (0) | Weighting | Total<br>score | Comments |
|---|--|--|-----------|----------------|----------|
| Understanding of the overview of the current COVID-19 situation by the OC | Have the relevant OC and responsible staff been informed about the <b>latest available guidance on the COVID-19 outbreak</b> (official web resources available from WHO, CDC, ECDC, UN, local public health authorities)? And are the OC and staff concerned committed to following the available guidance?  | 2  | 1         | 2              |          |
|   | Is the OC aware of global and local daily situation reports as provided by WHO or local public health authorities?   | 2  | 1         | 2              |          |
|   | Do the OC and responsible staff understand the risks and transmission routes of COVID-19, the steps that Event attendees can take to limit spread, the recognized best practices (including respiratory etiquette, hand hygiene, physical distancing, etc.), and the travel restrictions adopted by different countries that may affect the Event? | 2  | 1         | 2              |          |
| Event emergency preparedness and response plans                           | Has a <b>contingency medical response plan for COVID-19</b> been developed for the Event?  | 2  | 3         | 6              |          |
|   | Does the contingency medical response plan include <b>information about how attendees should interact with the host country healthcare system</b> (e.g. hotline/helpline telephone number, medical teams and first-aid points for the Event, local health care system)?  | 2  | 3         | 6              |          |
|   | Is there an <b>Emergency COVID-19 Outbreak Response Coordinator/Team</b> in the OC or other structure for the Event with defined roles and responsibilities, coordinating the health preparedness and response planning for the outbreak?  | 2  | 2         | 4              |          |
|   | Has the host country or OC requested <b>support from WHO and/or local public health authorities</b> ?  | 2  | 3         | 6              |          |
|   | <b>Has the OC acquired the following supplies to help reduce the risk of transmission of COVID-19?</b>   |  |           |                |          |
|   | Personal protective equipment (e.g. masks, gloves, gowns) for onsite medical personnel   | 2  | 3         | 6              |          |
|   | Hand sanitizer and alcohol rubs/gels, tissues, frequently replaced soap canisters and closed bins for safe disposal of hygienic materials (e.g. tissues, towels, sanitary products) in washrooms and changing rooms  | 2  | 3         | 6              |          |
|   | Hand sanitizers and alcohol rubs for all entrances and throughout the venue  | 2  | 3         | 6              |          |

|   |   |   |   |   |   |
|---|---|---|---|---|---|
|   | <b>If a person feels unwell/ shows symptoms of an acute respiratory infection during the Event:</b>   |   |   |   |   |
|   | Is there a procedure for athletes or spectators to clearly identify <b>whom to contact and how to do so</b> if they or other Event participants feel unwell?  | 2 | 3 | 6 |   |
|   | Is there a protocol on whom the OC should contact in the host country to report suspected cases and request testing and epidemiological investigations?   | 2 | 3 | 6 |   |
|   | Are <b>first-aid services or other medical services</b> in-place and equipped to support patients with respiratory symptoms?  | 2 | 2 | 4 |   |
|   | Are there <b>isolation rooms or mobile isolation units</b> available onsite?  | 2 | 2 | 4 |   |
|   | Are there any <b>designated medical facilities</b> that manage patients with COVID-19 infection in the host country?  | 2 | 2 | 4 |   |
|   | Are there <b>transportation services with trained medical professionals</b> available to transport critically ill patients with severe acute respiratory infections to a hospital or to evacuate them from the host country, if necessary?  | 2 | 2 | 4 |   |
|   | Has a <b>cleaning schedule</b> been developed to ensure the venue is clean and hygienic – wiping surfaces and any equipment regularly with disinfectant is strongly recommended (before, during and after the event and between each round of competition)?   | 2 | 3 | 6 |   |
|   | Are there established <b>screening measures</b> , including temperature checks in place for participants at the point of entry, venues, routes and on-site medical facilities (first-aid points)? (Please specify in Comments what these screening measures include)  | 2 | 3 | 6 |   |
|   | Is the host country conducting COVID-19 <b>laboratory diagnostic tests</b> ? (If Yes, please specify in comments the type of COVID-19 diagnostic test used)   | 2 | 3 | 6 | RT-PCR genetic test / Genetic screening test / Antigen test |
|   | Does the host country have a <b>national public health emergency preparedness and response plan</b> that can address severe respiratory diseases, including COVID-19?   | 2 | 2 | 4 |   |
|   | Is there a <b>preliminary agreement by the host country to provide care</b> for any COVID-19 cases connected with the Event?  | 2 | 3 | 6 |   |
|   | If the Event is for a duration of 14 days or longer, does the medical response plan for the event include resources and protocols for managing all public health interventions that would be necessary and supporting the national public health authorities if participants are infected and become unwell at the Event? (If the event is for less than 14 days, please score 0) | 0 | 3 | 0 |   |
|   | If the Event is for less than 14 days, does the medical response plan include protocols for OCs to notify all participants of possible exposure to COVID-19 if the OCs are made aware of any suspected or confirmed cases that attended the Event? (If the event is for 14 days or longer, please score 0)  | 0 | 3 | 0 |   |
| <b>Stakeholder and partner coordination</b> | Is there an established mechanism for collaboration and coordination between <b>the health and security sectors</b> , which is considered as crucial?   | 2 | 2 | 4 |   |
|   | Are there agreed, clear and easily understood processes in place for <b>reporting to external multi-sectoral stakeholders</b> (including surveillance authorities, WHO, CDC, ECDC, etc.) and disseminating risk communication messages (Media)?   | 2 | 2 | 4 |   |

|   |  |   |   |   |  |
|---|--|---|---|---|--|
| Command and control   | Is there a decision-making authority/body and an agreed procedure to <b>modify, restrict, postpone or cancel the Event</b> related to the evolving COVID-19 outbreak?  | 2 | 3 | 6 |  |
|   | Are there arrangements to activate a <b>strategic health operations centre</b> if there are suspected COVID-19 cases in connection with the Event?   | 0 | 2 | 0 |  |
|   | Have the OC and staff undergone training and exercises on personal safety procedures and emergency mitigation measures (including those specifically listed in this checklist)?  | 2 | 3 | 6 |  |
| Risk communication  | Is there a <b>risk communication strategy</b> for the Event in regard to COVID-19?   | 2 | 3 | 6 |  |
|   | Is there a <b>designated person(s) to lead media</b> activities and tasked with managing all external communications with national and international government officials, the general public, and the media? (If yes, please identify the spokesperson in comments)   | 2 | 2 | 4 |  |
|   | Has there been <b>monitoring of national and international media and social media</b> established for <b>rumours</b> to be able to counter them early? (Please explain in the comments what protocols are in place for counter messaging)  | 2 | 2 | 4 |  |
|   | Has coordination been set up with major official media channels and social media sites such as Twitter, Facebook and Instagram so that messaging can be coordinated with, and assisted by, the platforms to provide targeted messaging from OCs (including messaging to counter fake news and rumours, and proactive messaging about the status of the sporting event, including changes)? | 2 | 2 | 4 |  |
| Public health awareness of COVID-19 before and during the event | Has <b>public health advice</b> on clinical features of COVID-19, preventive measures, especially respiratory etiquette, hand hygiene practices, and physical distancing, been shared with all staff involved in the Event, athletes, the public, and personnel of all relevant stakeholders?  | 2 | 3 | 6 |  |
|   | Has information on the <b>at-risk populations</b> been provided to all athletes, the public and others so they may make an informed decision on their attendance based on their personal risks?  | 2 | 3 | 6 |  |
|   | Has public advice included information on the meaning of the following <b>measures: quarantine, self-isolation and self-monitoring</b> ?   | 2 | 2 | 4 |  |
| Surge capacity  | <b>Are there any surge arrangements in place in the event of a public health emergency during the Event - (i.e. suspected and confirmed cases of COVID-19?</b>   |   |   |   |  |
|   | Do these surge arrangements include funding for mitigation measures?   | 2 | 3 | 6 |  |
|   | Do these surge arrangements include stockpiles of equipment (e.g. personal protective equipment, etc.)   | 2 | 3 | 6 |  |
|   | Do these surge arrangements include training of extra staff?   | 2 | 2 | 4 |  |
|   | Do these surge arrangements include volunteers?  | 0 | 2 | 0 |  |
| Specific mitigation measures                                    | Will there be <b>daily health checks</b> of athletes/competitors?  | 2 | 2 | 4 |  |
|   | Will the <b>athletes be separated from other groups</b> , such as officials, support staff and spectators, to limit transmission?  | 2 | 2 | 4 |  |
|   | Are there measures in place to <b>limit the sharing of equipment, water bottles, towels, etc.</b> ?  | 2 | 3 | 6 |  |
|   | Will athletes be given closed <b>containers to allow for the safe disposal or storing of all hygienic materials</b> (e.g. tissues, towels, etc.)?  | 0 | 3 | 0 |  |

|   |          |          |          |  |
|---|----------|----------|----------|--|
| Will the Event have <b>designated seating</b> for all spectators?   | <b>2</b> | <b>3</b> | <b>6</b> |  |
| Does the designated <b>seating provided allow for physical distancing</b> between spectators (minimum of 1 metre)?                                    | <b>2</b> | <b>2</b> | <b>4</b> |  |
| Have <b>pre-travel health checks</b> been performed on all athletes to ensure underlying co-morbidities, medications, allergies, etc. are documented? | <b>0</b> | <b>2</b> | <b>0</b> |  |

|                                   |            |
|-----------------------------------|------------|
| Sum of mitigation measures        | <b>196</b> |
| <b>Total mitigation score (%)</b> | <b>89</b>  |

196

## Event overall risk score

The decision matrix takes the risk score and the mitigation score to provide a colour determination. This colour determination identifies the total risk of transmission and further spread of COVID-19 in relation to the Event. The "Colour Determination" key below the decision matrix describes the total risk for each colour.

|  |   |
|--|---|
| Total COVID-19 risk score (from "Risk Assessment" Tab) | 2 |
|--|---|

|  |    |
|--|----|
| Total mitigation score (from "Mitigation Checklist" Tab) | 89 |
|--|----|

## Risk Vs. Mitigation Matrix

| Total Risk Assessment Score       | Very Prepared to Mitigate COVID-19 Impacts (76-100) | Somewhat Prepared to Mitigate COVID-19 Impacts (51-75) | Somewhat Unprepared to Mitigate COVID-19 Impacts (26-50) | Very Unprepared to Mitigate COVID-19 Impacts (0-25) |
|-----------------------------------|---|--|--|---|
| 0 - Negligible                    | Very low  | Very low   | Very low   | Very low  |
| 1 - Very Low Risk                 | Very low  | Very low   | Low  | Low   |
| 2 - Low Risk                      | Low   | Low  | Low  | Moderate  |
| 3 - Moderate Risk (low-moderate)  | Low   | Moderate   | Moderate   | Moderate  |
| 4 - Moderate Risk (high-moderate) | Moderate  | Moderate   | High   | Very High   |
| 5 - High Risk                     | High  | High   | Very High  | Very High   |
| 6 - Very High Risk                | Very High   | Very High  | Very High  | Very High   |

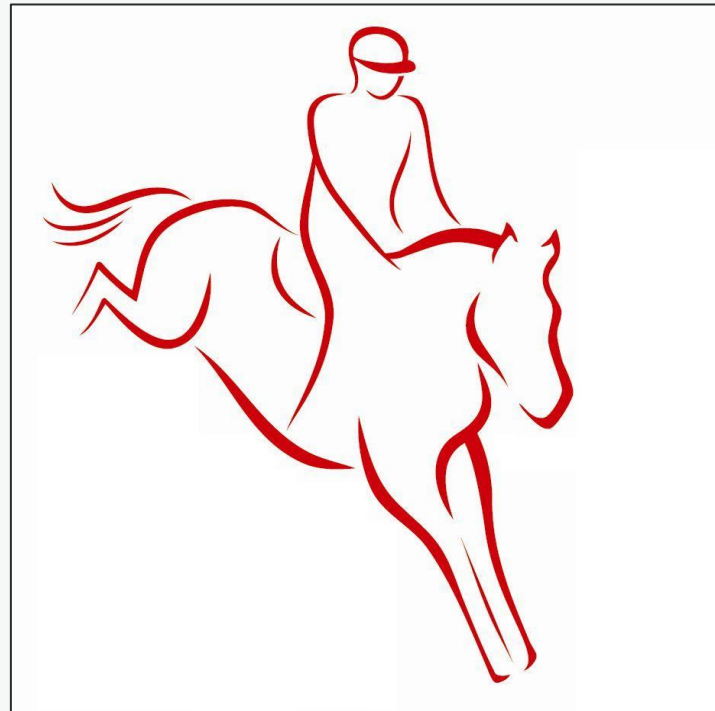
| KEY FOR COLOUR DETERMINATION OF OVERALL RISK |  |
|--|--|
| VERY LOW                                     | Overall risk of transmission and further spread of COVID-19 in relation to the Event is considered <u>very low</u> .   |
| LOW  | Overall risk of transmission and further spread of COVID-19 in relation to the Event is considered <u>low</u> . Recommend checking whether mitigation measures can be strengthened.  |
| MODERATE                                     | Overall risk of transmission and further spread of COVID-19 in relation to the Event is considered <u>moderate</u> . Recommend <u>significant</u> efforts to improve mitigation measures or reduce risk of transmission (decrease risk assessment score).          |
| HIGH   | Overall risk of transmission and further spread of COVID-19 in relation to the Event is considered <u>high</u> . Recommend <u>significant</u> efforts to improve <u>both</u> mitigation measures and reduce risk of transmission (decrease risk assessment score). |
| VERY HIGH                                    | Overall risk of transmission and further spread of COVID-19 in relation to the Event is considered <u>very high</u> .  |

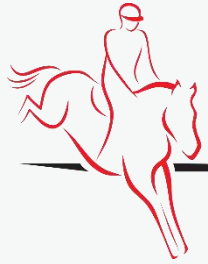


# STRZEGOM HORSE TRIALS 2021

\*\*\*\*\*

## RISK MITIGATION PLAN





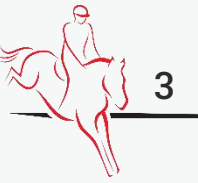
# Introduction

- Due to Covid-19 pandemic, we kindly ask you to familiarize with this document to minimise the risk of infection.
- While following these Guidelines is aimed to reduce the risk of COVID-19 infection during the competition, the risk is not eliminated.



# Introduction

---



- Every Participant of the event is obliged to familiarize with these Guidelines. Negligence of acknowledgment of the Guidelines doesn't relive from the duty of following the rules
- All the Participants of the event (excluding Organiser's employees) are taking part voluntarily and at their own responsibility.
- All Participants are required to comply with the rules of social coexistence and conduct in accordance with applicable laws and regulations of these Guidelines and other regulations in force at the competition, established by the Organiser.
- All deciding to take part in the event (in any role) and allowed to participate in the event by Organiser during the pandemic are doing so at their own risk.
- The Organising Committee doesn't take any responsibility for infection with Covid-19 of anyone taking part in the event.

# + Participant of the event

A Participant of the event is a person whose presence on the showground is essential for the sports competition, in particular:

- Competitors
- Supporting personnel - trainer, groom, horse owner and a person responsible for a minor athlete
- Person responsible for horse transport
- Official
- Event staff
- Security staff
- TV operators
- Media representatives
- Spectators

# + Restrictions of participation

The following restriction of participation in the event must be followed:

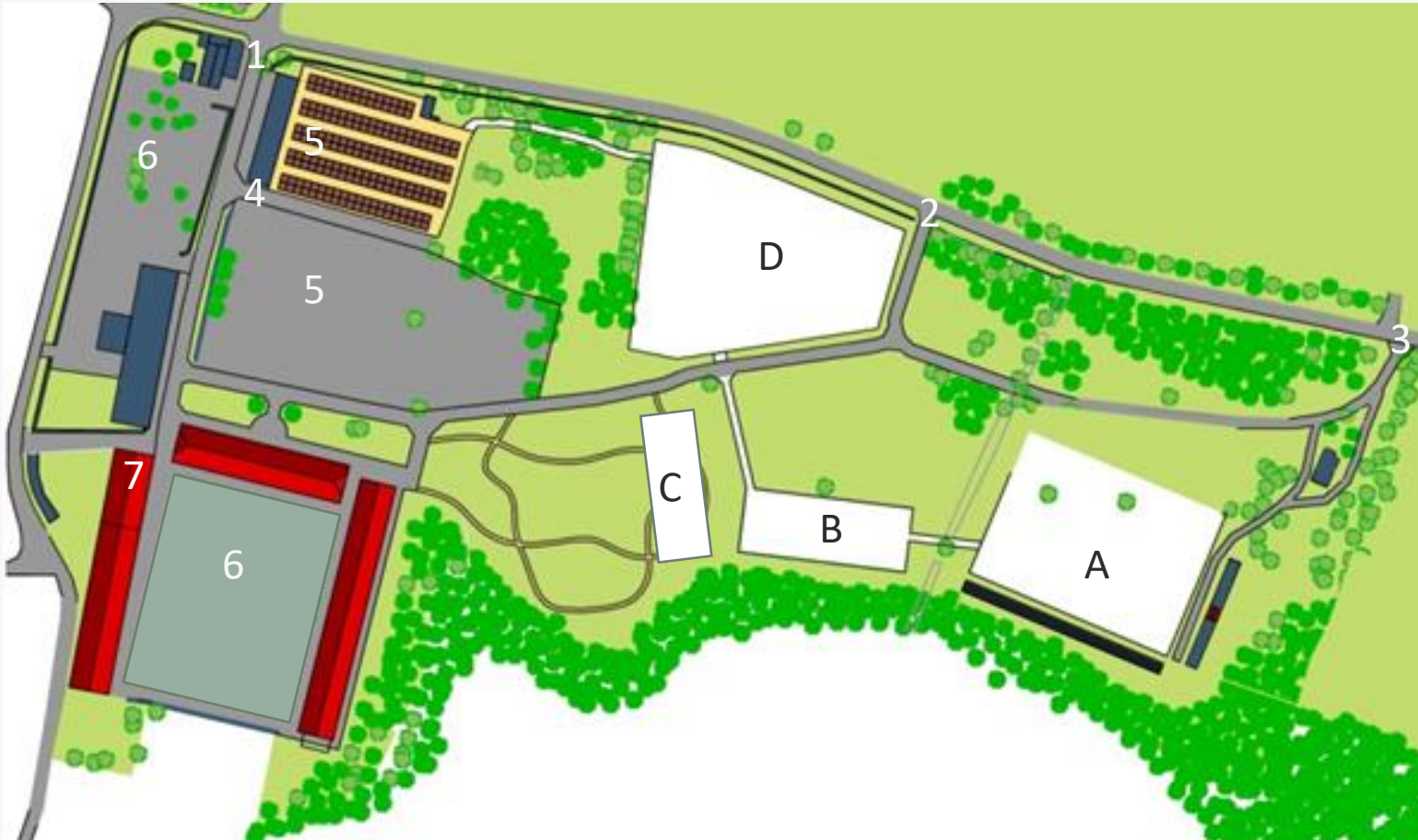
- The event takes place with a limited number of spectators - in accordance with current regulations in Poland.
- All participants of the event must wear a mask that covers the mouth and nose or keep 1,5m of social distance
- The Press Office will work only remotely (online). The number of Press Office Staff will be limited.
- The Organiser is going to issue a limited number of PRESS and PHOTO accreditations – two accreditations per editorial team /except for Official photographers of the Organiser and the FEI/.

# + The procedure of entering the showground

1. All Participants of the event are entering the showground using only the entry or gate specified by the Organiser. The control points and gates are clearly marked on the map. At the control point, Security Staff checks and verifies all the participants from the list provided by National Federations, performs a health interview.
2. During the control procedure, a member of the security staff has a right to:
  - a) Ask for an ID document
  - b) Ask to leave the vehicle
7. Each Participant given the access to the showground will be marked with a wristband.
8. In case of any health issues reported by any participant, the security staff will not permit access to the showground and will inform the Organiser and Medical Staff.



# + MAP OF THE SHOWGROUND



1. Gate I
2. Gate II
3. Gate III
4. Stable gate
5. Stable
6. Car park
7. Isolation space

# + Entry authorisation

## Gate I

- ❖ Competitors
- ❖ Supporting personnel
- ❖ Person responsible for horse transport
- ❖ Officials
- ❖ Event staff
- ❖ Security staff

## Gate II

- ❖ Officials
- ❖ Sponsors
- ❖ Exhibitors
- ❖ Catering
- ❖ Event Staff
- ❖ Security staff

## Gate III

- ❖ Spectators
- ❖ Media representatives
- ❖ TV operators
- ❖ Event Staff
- ❖ Security staff



# + Security on the showground

1. Each Participant must :

- a) wear a face mask covering mouth and nose unless there's a 1,5m distance from other Participants in the same space; this rule excludes an Athlete sitting on the horse;
- b) systematically sterilise hands at the stations located in toilets area, show office, competition zone, stables.

2. The Organiser will assign a Steward cooperating with the Organiser, who will coordinate and supervise the security system, especially the logistics of Participants, access to sanitizers, covering of mouth and nose by Participants.

3. All the rooms used during the event will be disinfected after each day of the event.

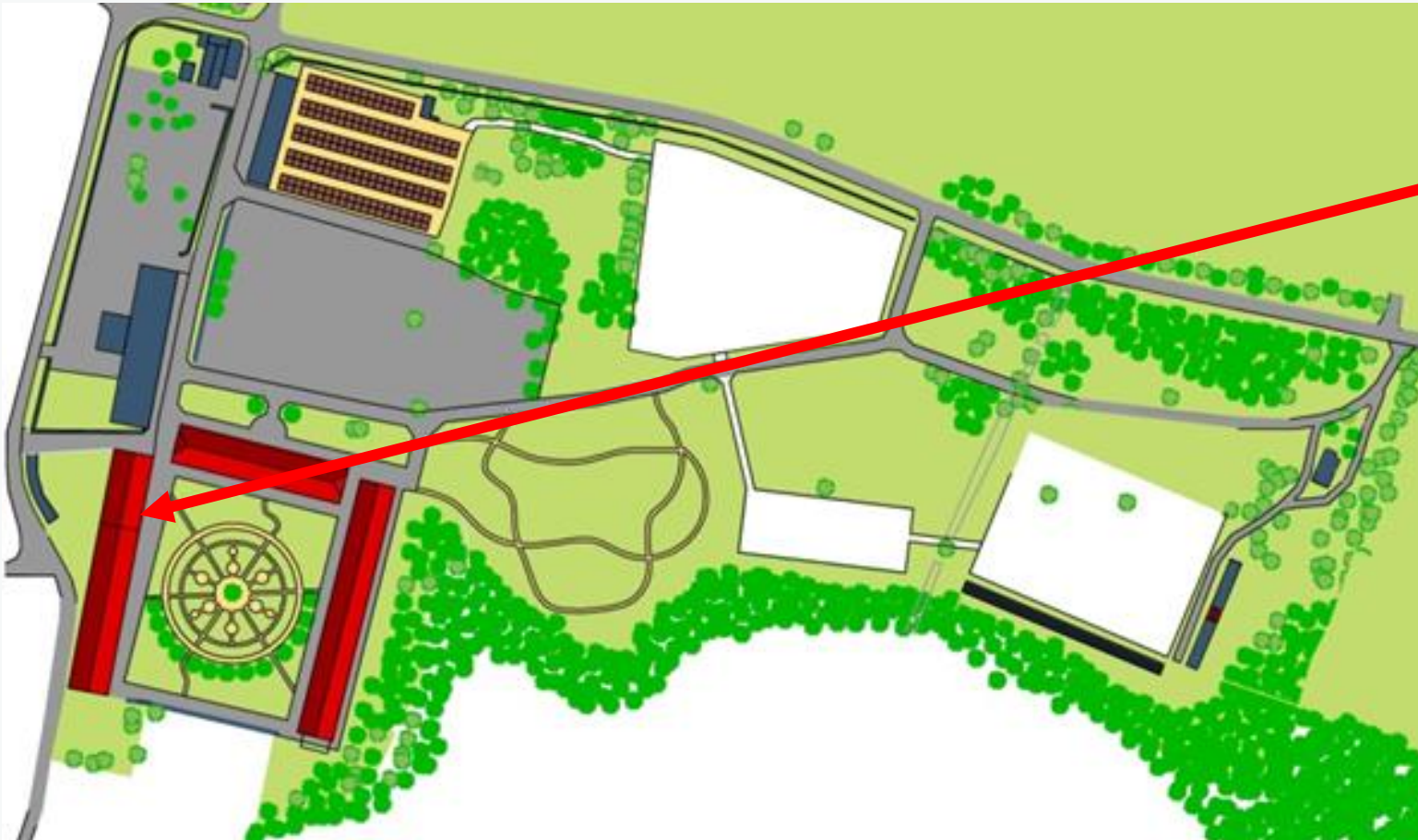
# + Security on the showground

The most common symptoms of Covid-19 are fever, dry cough and tiredness. Other symptoms that are less common and may affect some patients include: aches and pains, nasal congestion, headache, conjunctivitis, sore throat, diarrhoea, loss of taste or smell or a rash on skin or discoloration of fingers or toes. These symptoms are usually mild and begin gradually (Source: WHO website: <https://www.who.int/emergencies/diseases/novel-coronavirus-2019/question-and-answers-hub/q-a-detail/q-a-coronaviruses>) and the Participants with symptoms must immediately:

1. Go to the isolation space assigned by the Organiser.
2. Call the Organizer: 0048 601 769 772.

The Organiser will contact the Regional Sanitary and Epidemiological Station, competent for the showground of the event, or the 24-hour NFZ hotline 800-190-590.

# + Security on the showground



Isolation space for individuals  
with symptoms of Covid-19



# + Limitations and guidelines for specific groups of Participants

## Athletes

- Athletes can access Car Park zone, Stables, Show Office and Competition zone where they need to keep 1,5m of social distance.
- Minor Athletes can be accompanied by their representative.
- Athletes are not allowed in the Ground Jury box. All the issues are solved remotely. All official protests are managed in the Show Office as per PZJ and FEI rules.
- Cross Country and Show jumping test walking takes place keeping the 1,5m social distance rule.



# + Limitations and guidelines for specific groups of Participants

## TRAINERS

- Trainers can access the Car Park zone, Stables, Show Office and Competition zone, where they need to keep 1,5m of social distance.
- Because of limitations of direct contact, before dressage and cross country, test trainers give their instructions from the outside of the warm up area and keep the 1,5m social distance.
- Before the jumping test, the trainer is allowed to enter the warm up arena only 15 minutes before the rider's start.



# + Limitations and guidelines for specific groups of Participants

## GROOMS AND SUPPORTING TEAM

- Grooms can access the Car Park zone, Stables and Competition zone outside the warm up arena and competition area where they need to keep 1,5m of social distance.
- In case a rider is not accompanied by a trainer, the groom is allowed to enter the warm up area only 15 minutes before the rider's start.
- The Supporting Team can access the Car Park zone, Stables and Competition zones where they need to keep 1,5m of social distance.



# + Limitations and guidelines for specific groups of Participants

## OFFICIALS

- Officials (i.e. judges, scribes, Ground Jury assistants), while being indoors (i.e. judge's hut in dressage, GJ box in jumping test, control centre in cross country test), must wear face mask covering mouth and nose.
- Officials will be given disposable gloves.
- Officials will have access to separate toilet.



# + Limitations and guidelines for specific groups of Participants

## CAR PARK ZONE

- Only Participants of the Event have access to Car Park Zone.
- A distance of 1,5m between vehicles has to be kept.
- All Participants in the Car Park Zone have to keep 1,5 metre distance
- Gatherings of more than 15 people are strictly forbidden in the Car Park Zone.



# + Limitations - Officials

- Only Officials and essential staff responsible for running the test are allowed in GJ box area.
- The distance between each working post must be 1,5m, or the posts have to be divided with a screen or everyone has to wear a head shield.

# + Limitations in the Show Office

- The distance between each working post must be 1,5m or the posts have to be divided with a screen or everyone has to wear a mask that covers the mouth and nose .
- The number of people allowed in the Show Office is determined on the square meter space- the coefficient should be 15m<sup>2</sup> per 1 person, under the condition that there's one person being served at the post.
- Access to the Show Office is limited to Staff, Officials, Athletes and Supporting Team.

# + Limitations for media

1. Press Office will work only remotely (online).
2. The number of Press Office Staff will be limited.
  - The Organiser is going to issue a limited number of PRESS and PHOTO accreditations - two per editorial office /except Official photographers of the Organiser and the FEI/
  - Only active journalists, photographers or television crews working for registered media and official internet services can apply for accreditation. No accreditation will be given to bloggers or freelancers, unless they have a documented cooperation with beforementioned media.
3. Access to the showground is only given to:
  - Press Office Staff - press staff, social media staff, photo staff, video staff, Media Partners representatives
  - FEI accredited media - FEI TV, photographer
  - TV coverage staff
  - Online coverage staff
  - Accredited media
4. The Organiser will **not** provide a Press Office or Media Room for accredited media

**All Media representatives are to fill in the health check form. Also, they must inform the Organiser about the most common symptoms of Covid 19.**

**The most common symptoms of Covid-19 are fever, dry cough, and tiredness. Other symptoms that are less common and may affect some patients include aches and pains, nasal congestion, headache, conjunctivitis, sore throat, diarrhea, loss of taste or smell or a rash on skin or discoloration of fingers or toes. These symptoms are usually mild and begin gradually. (Source: WHO website: <https://www.who.int/emergencies/diseases/novel-coronavirus-2019/question-and-answers-hub/q-a-detail/coronavirus-disease-covid-19>).**

# + Limitations for sponsors

The number of sponsor representatives who will have access to the showground and to the specific zones will be limited.

- The Organiser allows the entry of a group of max. of 8 persons under the condition of keeping 1,5m social distance rule or using masks or face shields, covering the nose and mouth
- The Organiser will open a hospitality zone for Sponsors with a limited number of people
- Sponsor representatives are only allowed to access the Competition zone

**All Sponsor representatives are to fill in the health check form. Also, they must inform the Organiser about the most common symptoms of Covid 19.**

**The most common symptoms of Covid-19 are fever, dry cough, and tiredness. Other symptoms that are less common and may affect some patients include aches and pains, nasal congestion, headache, conjunctivitis, sore throat, diarrhoea, loss of taste or smell or a rash on skin or discoloration of fingers or toes. These symptoms are usually mild and begin gradually. (Source: WHO website: <https://www.who.int/emergencies/diseases/novel-coronavirus-2019/question-and-answers-hub/q-a-detail/coronavirus-disease-covid-19>).**



# + Limitations for spectators

The number of spectators who will have access to the showground will be limited.

- The Organiser allows entering of spectators under the condition of keeping 1,5m social distance rule or using of masks or face shield, covering the nose and mouth.
- Only half of the seats at the grandstands can be occupied.

**All spectators are to fill in the health check form. Also, they must inform the Organiser about the most common symptoms of Covid 19.**

**The most common symptoms of Covid-19 are fever, dry cough, and tiredness. Other symptoms that are less common and may affect some patients include aches and pains, nasal congestion, headache, conjunctivitis, sore throat, diarrhoea, loss of taste or smell or a rash on skin or discoloration of fingers or toes. These symptoms are usually mild and begin gradually. (Source: WHO website: <https://www.who.int/emergencies/diseases/novel-coronavirus-2019/question-and-answers-hub/q-a-detail/coronavirus-disease-covid-19>).**



# + Limitations for trade stands

1. The number of trade stands at the event is limited.
2. All the stands at the event must follow the Guidelines of Polish government on providing safety for employees and customers during the pandemic.
  - The distance between the employees should be 1,5m and if that's impossible, all employees should have Personal Protective Equipment (gloves, masks).
  - All staff serving customers must wear gloves and masks
  - All individuals queuing should keep min. 1,5m distance
  - At the entrance and at the till point there should be hand sanitizer available

**All the staff of trade stands is to fill in the health check form. Also, they must inform the Organiser about the most common symptoms of Covid 19. The most common symptoms of Covid-19 are fever, dry cough, and tiredness. Other symptoms that are less common and may affect some patients include aches and pains, nasal congestion, headache, conjunctivitis, sore throat, diarrhoea, loss of taste or smell or a rash on skin or discoloration of fingers or toes. These symptoms are usually mild and begin gradually. (Source: WHO website: <https://www.who.int/emergencies/diseases/novel-coronavirus-2019/question-and-answers-hub/q-a-detail/coronavirus-disease-covid-19>).**



# + Limitations for hospitality/ catering

All the stands at the event must follow the Guidelines of Polish government on providing safety for employees and customers during a pandemic.

- The distance between the employees should be 1,5m and if that's impossible, all employees should have Personal Protective Equipment (gloves, masks).
- All cooks and staff serving customers must wear gloves and masks
- All individuals queuing should keep min. 1,5m distance
- At the order collecting points and till points there should be hand sanitizer available
- Tables should have a min. 1,5m distance.
- All the tables should be disinfected after each use.

**All the hospitality/catering staff is to fill in the health check form. Also, they must inform the Organiser about the most common symptoms of Covid 19. The most common symptoms of Covid-19 are fever, dry cough, and tiredness. Other symptoms that are less common and may affect some patients include aches and pains, nasal congestion, headache, conjunctivitis, sore throat, diarrhoea, loss of taste or smell or a rash on skin or discoloration of fingers or toes. These symptoms are usually mild and begin gradually. (Source: WHO website: <https://www.who.int/emergencies/diseases/novel-coronavirus-2019/question-and-answers-hub/q-a-detail/coronavirus-disease-covid-19>).**

# + Appendix

## FORM - HEALTH INTERVIEW



### HEALTH INTERVIEW

- 1) Were you diagnosed with SARS CoV-2 in the last 14 days?  
☐ Yes ☐ No
- 2) Did you have contact with the person diagnosed with SARS CoV-2 in the last 14 days?  
☐ Yes ☐ No
- 3) Is your child/pupil or anyone in your household in quarantine now?  
☐ Yes ☐ No
- 4) Do you or anyone in your household have the most common symptoms of Covid 19.  
The most common symptoms of Covid-19 are fever, dry cough, and tiredness. Other symptoms that are less common and may affect some patients include aches and pains, nasal congestion, headache, conjunctivitis, sore throat, diarrhoea, loss of taste or smell or a rash on skin or discoloration of fingers or toes. These symptoms are usually mild and begin gradually.  
☐ Yes ☐ No
- 5) Does anyone in your household had any symptoms mentioned above in the last 14 days?  
☐ Yes ☐ No



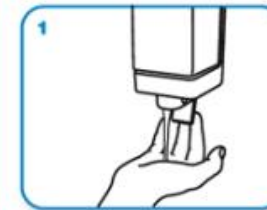
# + Appendix



## CLEAN HANDS PROTECT AGAINST INFECTION



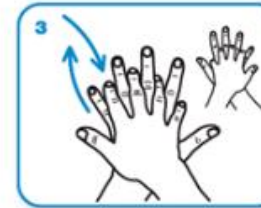
Wet hands with water



apply enough soap to cover all hand surfaces.



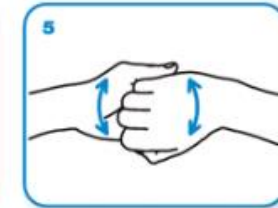
Rub hands palm to palm



right palm over left dorsum with interlaced fingers and vice versa



palm to palm with fingers interlaced



backs of fingers to opposing palms with fingers interlocked



rotational rubbing of left thumb clasped in right palm and vice versa



rotational rubbing, backwards and forwards with clasped fingers of right hand in left palm and vice versa.



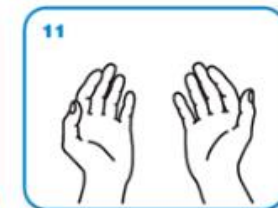
Rinse hands with water



dry thoroughly with a single use towel



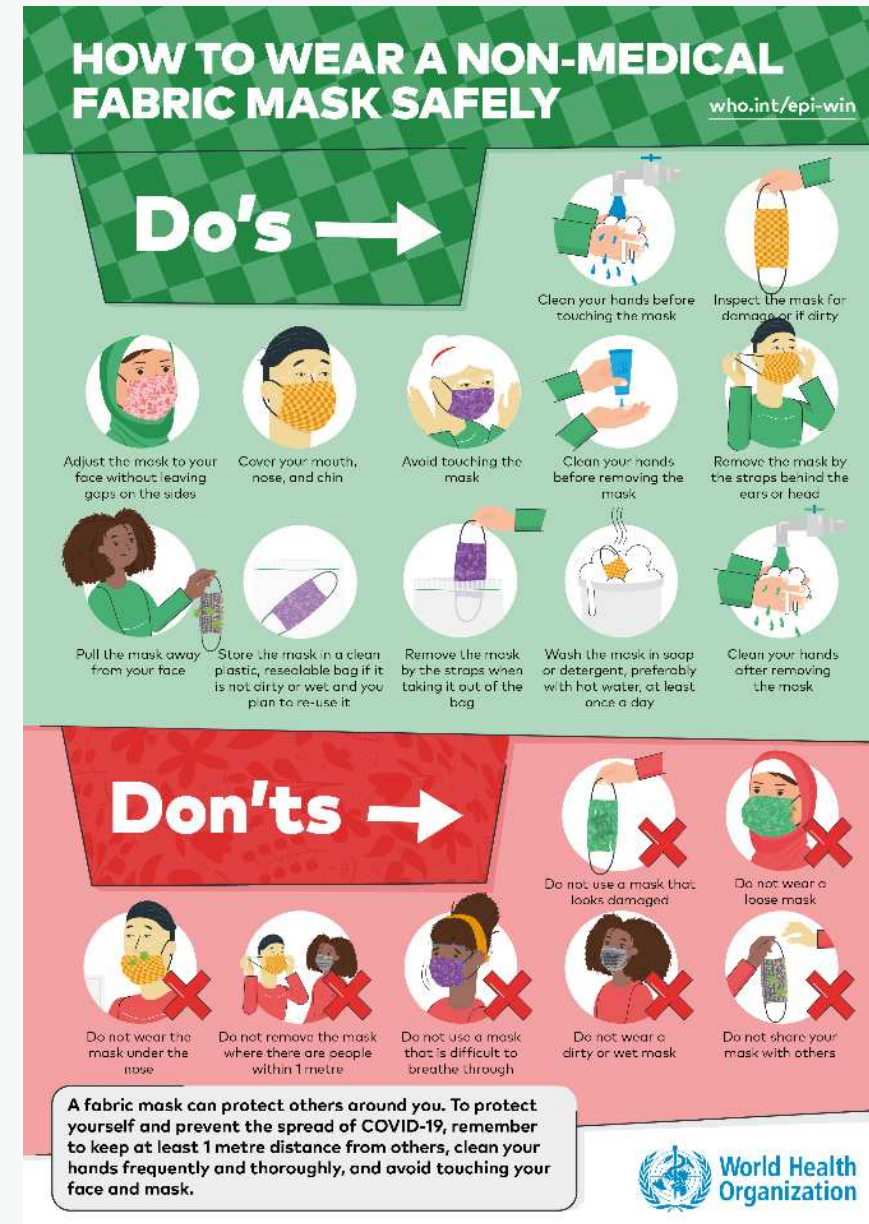
use towel to turn off faucet



...and your hands are safe.

# + Appendix

## HOW TO WEAR MASK SAFELY



19-22 August 2021

Strzegom (POL)

STRZEGOM SUMMER TOUR

CCI4\*-S CCI3\*-S CCI2\*-S CCI1\*-Intro

**SCHEDULE**

## **I. DENOMINATION OF THE EVENT**

---

**Venue:** Strzegom - STRZEGOM SUMMER TOUR

**NF:** POL

**Date:** 19/08/2021 to 22/08/2021

**Event Categories:**

CCI4\*-S

CCI3\*-S

CCI2\*-S

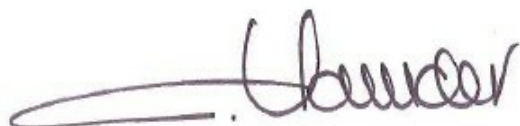
CCI1\*-Intro

## **II. GENERAL CONDITIONS**

---

- FEI Statutes, 24th edition, effective 19 November 2019
- FEI General Regulations, 24th edition, effective 1st January 2020, updates effective 1st January 2021
- FEI Veterinary Regulations, 14th edition, effective 1 January 2018, updates effective 1st January 2021
- FEI Eventing Rules and its Annexes, 25th Edition effective 1st January 2019, updates 1st January 2021
- Equine Anti-Doping and Controlled Medication Regulations (EADCMR), 3rd Edition, effective 1st January 2021
- FEI Anti-Doping Rules for Human Athletes (ADRHA), based upon the 2021 WADA Code, effective 1st January 2021
- The FEI Policy for Enhanced Competition Safety during the Covid-19 Pandemic, effective as of 1 July 2020 and until further notice
- All subsequent published revisions/updates, the provisions of which will take precedence.

Approved by the FEI, Lausanne, on 08 July 2021 (V1), modified on 16 July 2021 (V2), modified on 13 August 2021 (V3), modified on 17 August 2021 (V4)



Catrin Norinder  
FEI Director Eventing and Olympic

## **Table of Contents**

|  |           |
|--|-----------|
| <b>I. DENOMINATION OF THE EVENT</b>                              | <b>1</b>  |
| <b>II. GENERAL CONDITIONS</b>                                    | <b>1</b>  |
| <b>III. THE FEI CODE OF CONDUCT FOR THE WELFARE OF THE HORSE</b> | <b>4</b>  |
| <b>IV. GENERAL INFORMATION</b>                                   | <b>5</b>  |
| 1. ORGANISER   | 5         |
| 2. ORGANISING COMMITTEE  | 6         |
| 3. EVENT DIRECTOR  | 6         |
| 4. STABLE MANAGER  | 6         |
| <b>V. OFFICIALS</b>  | <b>7</b>  |
| <b>VI. INVITATIONS</b>   | <b>10</b> |
| 1. GENERAL   | 10        |
| 2. ENTRY RIGHTS TO SHOWGROUNDS / ACCREDITED PERSONS              | 10        |
| <b>VII. ENTRIES</b>  | <b>11</b> |
| 1. ENTRY DATES AND ENTRY FEES                                    | 11        |
| 2. DETAILS ENTRY PROCEDURE FEE / PAYMENT                         | 12        |
| 3. OTHER FEES  | 12        |
| 4. NO-SHOWS AND LATE WITHDRAWALS                                 | 13        |
| 5. QUALIFICATIONS  | 13        |
| <b>VIII. TIMETABLE</b>   | <b>14</b> |
| <b>IX. COMPETITIONS</b>  | <b>16</b> |
| CCI4*-S  | 16        |
| CCI3*-S  | 18        |
| CCI2*-S  | 19        |
| CCI1*-INTRO  | 20        |
| PRIZE MONEY SUMMARY  | 22        |
| <b>X. FACILITIES OFFERED</b>                                     | <b>23</b> |
| 1. ATHLETES  | 23        |
| 2. GROOMS  | 23        |

|   |           |
|---|-----------|
| <b>XI. LOGISTICAL, ADMINISTRATIVE AND TECHNICAL INFORMATION</b>                 | <b>24</b> |
| 1. DRAWS  | 24        |
| 2. COMPETITION ARENAS   | 24        |
| 3. PRACTICE ARENAS  | 24        |
| 4. STABLES  | 24        |
| 5. SCORING/TIMING PROVIDER  | 24        |
| 6. OTHER TECHNOLOGY/SERVICE PROVIDER(S)   | 25        |
| 7. PRIZE-GIVING CEREMONY  | 25        |
| 8. ADVERTISING ON ATHLETES AND HORSES   | 25        |
| 9. TICKETING  | 25        |
| 10. BETTING   | 25        |
| 11. TRANSPORT REIMBURSEMENT HORSES/PONIES                                       | 25        |
| 12. WELCOME   | 25        |
| 13. LOCAL TRANSPORTATION & ARRANGEMENTS FROM HOTEL TO SHOWGROUNDS               | 25        |
| 14. LORRY / CARAVAN FACILITIES  | 25        |
| 15. SUSTAINABILITY  | 26        |
| <b>XII. VETERINARY MATTERS</b>  | <b>27</b> |
| 1. CUSTOMS FORMALITIES  | 27        |
| 2. HEALTH REQUIREMENTS  | 27        |
| 3. NATIONAL REQUIREMENTS  | 27        |
| 4. PONIES   | 27        |
| 5. INJURY SURVEILLANCE  | 27        |
| 6. TRANSPORT OF HORSES  | 27        |
| 7. VENUE ARRIVAL INFORMATION & FITNESS TO COMPETE                               | 28        |
| 7.1 PASSPORTS (FEI GENERAL REGULATIONS ARTICLE 137)                             | 28        |
| 7.2 VACCINATIONS - EQUINE INFLUENZA (FEI VETERINARY REGULATIONS ARTICLE 1003)   | 28        |
| 7.3 EXAMINATION ON ARRIVAL (FEI VETERINARY REGULATIONS ARTICLE 1031)            | 28        |
| 7.4 HORSE INSPECTIONS (FEI VETERINARY REGULATIONS ARTICLES 1034-1042)           | 29        |
| 7.5 LIMB SENSITIVITY EXAMINATION (FEI VETERINARY REGULATIONS ARTICLE 1048-1053) | 29        |
| 8. EQUINE ANTI-DOPING AND CONTROLLED MEDICATION PROGRAMME (EADCMP)              | 29        |
| 8.1 SAMPLING (FEI VETERINARY REGULATIONS CHAPTER VII)                           | 29        |
| 8.2 ELECTIVE TESTING (FEI VETERINARY REGULATIONS ARTICLES 1057 AND 1058)        | 29        |
| <b>XIII. HUMAN ANTI-DOPING</b>  | <b>29</b> |
| <b>XIV. ADDITIONAL INFORMATION</b>  | <b>30</b> |
| 1. THE FEI POLICY FOR ENHANCED COMPETITION SAFETY DURING THE COVID-19 PANDEMIC  | 30        |
| 2. MEDICAL INFORMATION FORM FOR ARMBANDS  | 30        |
| 3. INSURANCES AND NATIONAL REQUIREMENTS   | 31        |
| 3.1 ATHLETES, OWNERS AND SUPPORT PERSONNEL                                      | 31        |
| 3.2 ATHLETES AND OWNERS   | 31        |
| 4. PROTESTS / APPEALS   | 32        |
| 5. DISPUTES   | 32        |
| 6. MODIFICATION TO SCHEDULE   | 32        |
| 7. ADDITIONAL INFORMATION FROM THE ORGANISER                                    | 32        |
| 8. MINIMUM AGE LIMITATION   | 32        |
| 9. PRIZE MONEY DISTRIBUTION   | 32        |
| <b>XV. ANNEXES</b>  | <b>33</b> |

### **III. THE FEI CODE OF CONDUCT FOR THE WELFARE OF THE HORSE**

---

The Fédération Equestre Internationale (FEI) expects all those involved in international equestrian sport to adhere to the FEI's Code of Conduct and to acknowledge and accept that at all times the welfare of the horse must be paramount and must never be subordinated to competitive or commercial influences.

1. At all stages during the preparation and training of competition horses, welfare must take precedence over all other demands. This includes good horse management, training methods, farriery and tack, and transportation.
2. Horses and Athletes must be fit, competent and in good health before they are allowed to compete. This encompasses medication use, surgical procedures that threaten welfare or safety, pregnancy in mares and the misuse of aids.
3. Events must not prejudice horse welfare. This involves paying careful attention to the competition areas, ground surfaces, weather conditions, stabling, site safety and fitness of the horse for onward travel after the event.
4. Every effort must be made to ensure that horses receive proper attention after they have competed and that they are treated humanely when their competition careers are over. This covers proper veterinary care, competition injuries, euthanasia and retirement.
5. The FEI urges all involved with the sport to attain the highest levels of education in their areas of expertise.

The Long version of this Code can be obtained from the Fédération Equestre Internationale, HM King Hussein I Building, Chemin de la Joliette 8, 1006 Lausanne, Switzerland. Telephone: +41 21 310 47 47. The Code is available in English. The Code is also available on the FEI's website: <https://inside.fei.org/fei/regulations/general-rules>.

## IV. GENERAL INFORMATION

---

### 1. ORGANISER

**Name:** LKS Stragona

**Address:** Morawa 36  
58-150 Strzegom Poland

**Phone:** 0048 748554042

**Fax:**

**Email:** office@stragona.pl

**Website:** www.strzegomhorsetrials.pl

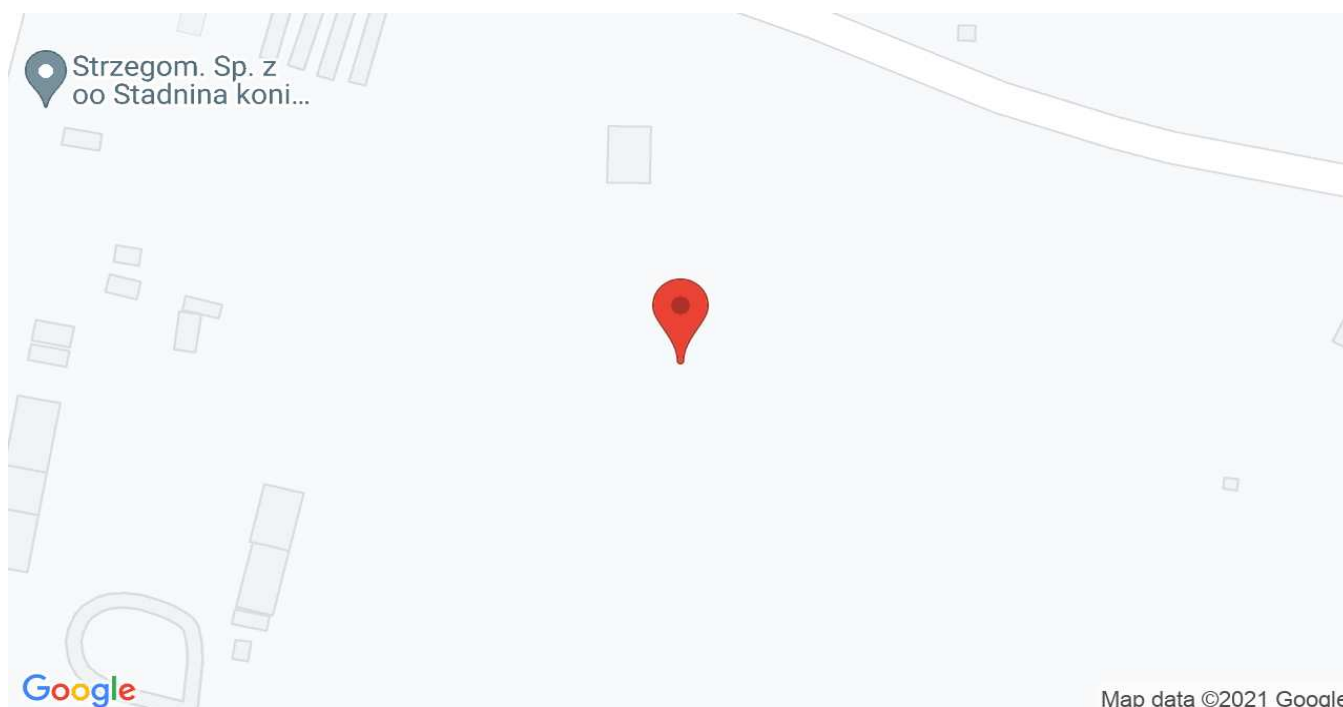
### Showground contact details

**Venue name:** Strzegom

**Address:** Morawa 36  
58-150 Strzegom Poland

**Phone:** 0048 748554042

**GPS Coordinates:** Lat: 50.96729, Long: 16.39881



### Accessibility details (directions by road, nearest airport / train station):

**By car:** 14 km from Motorway A4 direction Strzegom



**By plane:** Airport Wrocław – 50 km from Main Arena (approx 40 min.)

**By train:** International Train Station Wrocław – 55 km from Main Arena

## **2. ORGANISING COMMITTEE**

**Show Secretary**                      Agnieszka TYMCZYSZYN

**Press Officer**                        Agnieszka CHMIELINSKA

**Security Officer**                      Mateusz OSICKI

## **3. EVENT DIRECTOR**

**Name:**                                  Marta WÓJCIK

**Address:**                              58-150 Strzegom Poland

## **4. STABLE MANAGER**

**Name:**                                  Malgorzata SICZYNSKA

## V. OFFICIALS

| Assignment                    | Name / FEI ID                             | NF  | Function               | Events                  |
|-------------------------------|---|-----|------------------------|-------------------------|
| <b>1. Ground Jury</b>         |   |     |                        |                         |
| <b>CCI4*-S</b>                |   |     |                        |                         |
| Ground Jury President         | <b>Gerd KUEST</b><br>10052424             | GER | Judge (3)              |                         |
| Ground Jury Member            | <b>Janet SURR</b><br>10146687             | GBR | Judge (2)              |                         |
| <b>CCI3*-S</b>                |   |     |                        |                         |
| Ground Jury President         | <b>Gerd KUEST</b><br>10052424             | GER | Judge (3)              |                         |
| Ground Jury Member            | <b>Janet SURR</b><br>10146687             | GBR | Judge (2)              |                         |
| <b>CCI2*-S</b>                |   |     |                        |                         |
| Ground Jury President         | <b>Katarzyna KONARSKA</b><br>10093780     | POL | Judge (3)              |                         |
| Ground Jury Member            | <b>John LYTTLE</b><br>10160352            | IRL | Judge (2)              |                         |
| <b>CCI1*-Intro</b>            |   |     |                        |                         |
| Ground Jury President         | <b>Malgorzata CHAJECKA</b><br>10149409    | POL | Judge (2)              |                         |
| Ground Jury Member            | <b>Izabela BEK-KACZKOWSKA</b><br>10221244 | POL | Judge (N)              |                         |
| <b>2. Technical Delegate</b>  |   |     |                        |                         |
| Technical Delegate            | <b>Michael GOLA</b><br>10140590           | GER | Technical delegate (2) | CCI2*-S,<br>CCI1*-Intro |
| Technical Delegate            | <b>Gaston BILEITCZUK</b><br>10008694      | FRA | Technical delegate (3) | CCI4*-S,<br>CCI3*-S     |
| Assistant Technical Delegate  | <b>Michael GOLA</b><br>10140590           | GER | Technical delegate (2) | CCI4*-S                 |
| <b>3. Course Designer</b>     |   |     |                        |                         |
| Cross Country Course Designer | <b>Marcin KONARSKI</b><br>10004896        | POL | Course designer (3)    | All Events              |

| Assignment   | Name / FEI ID                                       | NF  | Function                            | Events     |
|--|---|-----|-------------------------------------|------------|
| Jumping Course Designer  | Krzysztof KIERZEK<br>10137214                       | POL | Course designer (2)                 | All Events |
| Cross Country Assistant Course Designer                          | Bernd BACKHAUS<br>10003719                          | GER | Course designer (3)                 | All Events |
| Course Builder   | XC JUMPS - Marcin Konarski<br>30000055              | POL | Corporation                         | All Events |
| <b>4. Chief Steward</b>  |   |     |                                     |            |
| Chief Steward  | Justyna OLSZAK<br>10119851                          | POL | Steward (2)                         | All Events |
| <b>5. Assistant Stewards</b>                                     |   |     |                                     |            |
| Assistant Steward  | Zsófia PINTÉR<br>10089558                           | HUN | Steward (1)                         | All Events |
| Assistant Steward  | Anna AUGUSTYNSKA MINCGER<br>10108472                | POL | Steward (1)                         | All Events |
| Assistant Steward  | Lucyna LASICA<br>10105563                           | POL | Steward (N)                         | All Events |
| Assistant Steward  | Beata PAKULSKA<br>10196000                          | POL | Steward (1)                         | All Events |
| <b>6. FEI Veterinary Delegate</b>                                |   |     |                                     |            |
| Veterinary Delegate  | Andrzej BEREZNOWSKI<br>10049455                     | POL | Official Veterinarian (3)           | All Events |
| <b>7. Veterinary Service Manager &amp; Treating Veterinarian</b> |   |     |                                     |            |
| Veterinary Service Manager (VSM)                                 | Janusz OKONSKI<br>10049846                          | POL | Official Veterinarian (3)           | All Events |
| Treating Veterinarian  | Lukasz GATKIEWICZ<br>10086688                       | POL | FEI Permitted Treating Veterinarian | All Events |
| Treating Veterinarian  | Michał KORNASZEWSKI<br>10086690                     | POL | FEI Permitted Treating Veterinarian | All Events |
| <b>8. Chief Medical Officer &amp; Medical Services</b>           |   |     |                                     |            |
| Chief Medical Officer  | Piotr WOZNIAK<br>10007531<br>Phone: 00486 603317213 | POL |                                     | All Events |
| Medical Services   | PW Piotr Woźniak<br>30000058                        |     | Corporation                         | All Events |

| Assignment | Name / FEI ID  | NF | Function | Events     |
|------------|--|----|----------|------------|
| 9. Farrier |  |    |          |            |
| Farrier    | <b>Ryszard MAMAJEK</b><br>10236529<br>Phone: 0048602589257     |    |          | All Events |
| Farrier    | <b>Mieczyslaw KRYSZCZYNSKI</b><br>10235282<br>Phone: 605312762 |    |          | All Events |

## **VI. INVITATIONS**

---

### **1. GENERAL**

|  |   |
|--|---|
| <b>Invited NFs</b>                                   | Unlimited   |
| <b>Number of athletes from the host nation</b>       | Unlimited   |
| <b>Number of athletes per NF</b>                     | Unlimited   |
| <b>Maximum number of horses per athlete</b>          | Unlimited   |
| <b>Ballot procedure in case of excessive entries</b> | The number of starters will be limited to MAX. 250 in all series/classes. |

If there are more than 250 entries at the closing date: priority to be given for entries with payments and for 4\* level up to 80 horses in CCI4\*. After 250 places are filled, the remaining entries will be placed on a waiting list and will be admitted only if there are any withdrawals from the initial 250.

Athletes are invited by the Organiser through their National Federation.  
One (1) groom per athlete.

### **2. ENTRY RIGHTS TO SHOWGROUNDS / ACCREDITED PERSONS**

Entry right to the stable area according to FEI Veterinary Regulations Articles 1008-1009

#### **NUMBER OF ACCREDITED PERSONS**

|                    |   |
|--------------------|---|
| <b>Athlete</b>     | Unlimited                                       |
| <b>Partner</b>     | 1   |
| <b>Groom</b>       | 1   |
| <b>Horse owner</b> | 2 accreditations per horse acc. to FEI Passport |

## VII. ENTRIES

### IMPORTANT

- Entries must be made through the FEI Entry System for all categories of this Event (<https://entry.fei.org>);
- Additional documentation can be found at:  
<https://inside.fei.org/fei/your-role/it-services/fei-entry-system>
- All Athletes and Horses participating in any International Competition must be registered with the FEI;
- Athletes and/or Horses present at the Event without having been entered through the FEI's Online Entry System will automatically be disqualified unless compelling circumstances warrant otherwise.

### 1. ENTRY DATES AND ENTRY FEES

Entries have to be in accordance with Art. 509 of the FEI Eventing Rules, 25th edition, effective 1st January 2020, updates effective 1st January 2021.

#### Deadlines for entries

|   |                               |
|---|-------------------------------|
| <b>Closing date for definite entries:</b> | <b>CCI4*-S</b> 26/07/2021     |
|   | <b>CCI3*-S</b> 26/07/2021     |
|   | <b>CCI2*-S</b> 26/07/2021     |
|   | <b>CCI1*-Intro</b> 26/07/2021 |

|                                     |                               |
|-------------------------------------|-------------------------------|
| <b>Last date for substitutions:</b> | <b>CCI4*-S</b> 10/08/2021     |
|                                     | <b>CCI3*-S</b> 10/08/2021     |
|                                     | <b>CCI2*-S</b> 10/08/2021     |
|                                     | <b>CCI1*-Intro</b> 10/08/2021 |

#### Fees for horses

| <b>Entry fee per horse</b> |                        |
|----------------------------|------------------------|
| CCI4*-S                    | 425 EUR incl. VAT (8%) |
| CCI3*-S                    | 380 EUR incl. VAT (8%) |
| CCI2*-S                    | 360 EUR incl. VAT (8%) |
| CCI1*-Intro                | 300 EUR incl. VAT (8%) |

#### EADCMP Fee

Lower Level Events (CIMs) CHF 18 per horse per event (For definition of CIMs see Appendix E of the FEI General Regulations)  
Higher Level Events CHF 25 per horse per event (All other events not defined as CIMs)

|         |  |
|---------|--|
| CCI4*-S | 25 EUR incl. VAT (0%) (25 CHF not included in entry fee) |
|---------|--|

|                               |  |
|-------------------------------|--|
| CCI3*-S                       | 18 EUR incl. VAT (0%) (18 CHF not included in entry fee) |
| CCI2*-S                       | 18 EUR incl. VAT (0%) (18 CHF not included in entry fee) |
| CCI1*-Intro                   | 18 EUR incl. VAT (0%) (18 CHF not included in entry fee) |
| <b>Stabling fee per horse</b> |  |
| Not Applicable                |  |
| <b>Total fee per horse</b>    |  |
| CCI4*-S                       | 450 EUR incl. VAT  |
| CCI3*-S                       | 398 EUR incl. VAT  |
| CCI2*-S                       | 378 EUR incl. VAT  |
| CCI1*-Intro                   | 318 EUR incl. VAT  |

## 2. DETAILS ENTRY PROCEDURE FEE / PAYMENT

OC details: LKS STRAGONA, Morawa 36, 58-150 Strzegom

Payment in EUR:

SANTANDER BANK POLSKA S.A. O/STRZEGOM

PL 42 1090 2343 0000 0001 0499 6685

Swift codes: WBK PPLPP

If you need an invoice, you need to declare it during payment.

If you don't do that, your invoice will not be issued.

Invoices ordered after the show will not be issued.

## 3. OTHER FEES

All other fees must be listed hereunder with the details of the amounts to be charged and approved by the FEI. Only fees approved by the FEI and listed in the approved Schedule can be charged by the OC.

Electricity for boxes  
(upon request) 100 PLN per box incl. VAT (8%)

Hay 5 EUR per bale incl. VAT (8%)

Straw 3 EUR per bale incl. VAT (8%)

Shavings 15 EUR per bale incl. VAT (8%)

### Lorry / Caravan area

Power supply 75 EUR per lorry/caravan incl. VAT (8%) - Provided by the OC

### Specific fees

Official Veterinary                      25 EUR per horse incl. VAT (8%)  
Papers

**PLEASE NOTE:**

All riders are reminded that in Poland is in force "viaTOOLL" system – electronic toll collection system.

All aforementioned amounts include VAT, if applicable

VAT number of the Organiser:

#### **4. NO-SHOWS AND LATE WITHDRAWALS**

In the case of withdrawals after the date of definite entries or no-shows the athlete or the respective NF will be held liable to reimburse the OC for the actual financial loss incurred by the OC (i.e. stabling and hotel expenses) as a result of the late withdrawal or no-show.

**Amount charged**

ALL WITHDRAWAL:

Between 26.07-10.08 – 50% entry fee have to be paid

After 10.08 – 100% entry fee have to be paid

In case of withdrawal or no-shows after the date of 10.08.2021: the athlete or the respective NF the athlete will be held liable and have to pay full entry fee. Presentation of a med. or vet. certificate will not exempt from having to charge fees.

**Refund procedure**

Withdrawal:

Before 26.07 – 100% refund

Before 10.08 – 50% refund

After 10.08 – no refund

In case of withdrawal or no-shows after the date of 10.08.2021: the athlete or the respective NF the athlete will be held liable and have to pay full entry fee. Presentation of a med. or vet. certificate will not exempt from having to charge fees.

#### **5. QUALIFICATIONS**

Entries have to be in accordance with Art. 520 and 521 of the FEI Eventing Rules, 25th edition, effective 1st January 2020, updates effective 1st January 2021.

The eligibility to compete will be determined by a combination of the following:

- The level of the Athlete category (National, D, C, B, A) (Art.519)
- The achievement of a number of Minimum Eligibility Requirements according to the eligibility matrix of requirements (Art. 520)



## VIII. TIMETABLE

| CCI4*-S                    | Day       | Date       | Time  |
|----------------------------|-----------|------------|-------|
| Vet examination on arrival | Wednesday | 18/08/2021 | 08:00 |
| Opening of stables         | Wednesday | 18/08/2021 | 08:00 |
| Official course inspection | Thursday  | 19/08/2021 | 15:00 |
| Dressage Test              | Friday    | 20/08/2021 | 13:45 |
| Jumping Test               | Saturday  | 21/08/2021 | 16:30 |
| Cross-Country Test         | Sunday    | 22/08/2021 | 13:00 |
| Prize-giving               | Sunday    | 22/08/2021 | 15:00 |

| CCI3*-S                    | Day       | Date       | Time  |
|----------------------------|-----------|------------|-------|
| Vet examination on arrival | Wednesday | 18/08/2021 | 08:00 |
| Opening of stables         | Wednesday | 18/08/2021 | 08:00 |
| Official course inspection | Thursday  | 19/08/2021 | 15:00 |
| Dressage Test - 1st Day    | Thursday  | 19/08/2021 | 17:00 |
| Dressage Test - 2nd Day    | Friday    | 20/08/2021 | 08:00 |
| Jumping Test               | Saturday  | 21/08/2021 | 14:30 |
| Cross-Country Test         | Sunday    | 22/08/2021 | 11:20 |
| Prize-giving               | Sunday    | 22/08/2021 | 14:00 |

| CCI2*-S                    | Day       | Date       | Time  |
|----------------------------|-----------|------------|-------|
| Vet examination on arrival | Wednesday | 18/08/2021 | 08:00 |
| Opening of stables         | Wednesday | 18/08/2021 | 08:00 |
| Official course inspection | Thursday  | 19/08/2021 | 15:00 |
| Dressage Test              | Friday    | 20/08/2021 | 08:00 |
| Jumping Test               | Saturday  | 21/08/2021 | 11:45 |
| Cross-Country Test         | Sunday    | 22/08/2021 | 09:30 |

|                            |           |            |       |
|----------------------------|-----------|------------|-------|
| Prize-giving               | Sunday    | 22/08/2021 | 13:00 |
| CCI1*-Intro                | Day       | Date       | Time  |
| Vet examination on arrival | Wednesday | 18/08/2021 | 08:00 |
| Opening of stables         | Wednesday | 18/08/2021 | 08:00 |
| Official course inspection | Thursday  | 19/08/2021 | 15:00 |
| Dressage Test              | Friday    | 20/08/2021 | 10:00 |
| Jumping Test               | Saturday  | 21/08/2021 | 09:45 |
| Cross-Country Test         | Saturday  | 21/08/2021 | 17:00 |
| Prize-giving               | Sunday    | 22/08/2021 | 11:00 |

## **IX. COMPETITIONS**

---

These competitions will be in accordance with the FEI Eventing Rules and its Annexes, 25th edition, effective 1st January 2020, updates effective 1st January 2021.

### **CCI4\*-S**

#### **TECHNICAL CONDITIONS**

**DRESSAGE TEST** CCI4\* B  
CCI4\*-S

**CROSS-COUNTRY TEST** Length: 3420 m  
CCI4\*-S Speed: 570 m/min  
Number of efforts: 32-35

**JUMPING** Distance: 600 m  
CCI4\*-S Speed: 375 m/min  
Max. number of efforts: 15  
Number of obstacles: 12

#### **PRIZE CLASSIFICATION**

---

**Total amount of prize money per section:** 2,000 EUR

---

---

2000 EUR

(based on up to 40 horses in class)

I-650

II-500

III-400

IV- 350

100 EUR to be divided into 25%

4000 EUR

(based on more than 40 horses in class)

I-1300

II-1000

III -500

IV-450

V-350

VI – 300

100 EUR to be divided into 25%

---

10%

---

**Other details on prize money distribution**

Pay by bank transfer – 21 days

CCI3\*-S

TECHNICAL CONDITIONS

**DRESSAGE TEST** CCI3\* B  
CCI3\*-S

**CROSS-COUNTRY TEST** Length: 3025-3575 m  
CCI3\*-S Speed: 550 m/min  
Number of efforts: 27-32

**JUMPING** Distance: 600 m  
CCI3\*-S Speed: 350 m/min  
Max. number of efforts: 14  
Number of obstacles: 10-11

PRIZE CLASSIFICATION

**Total amount of prize money per section:** 1,000 EUR  
Based on 60 horses in class, if more than 60 starters prize money will be double.

1000 EUR  
(based on 60 horses in class, if more than 60 starters prize money will be double)

I-300  
II-225  
III-150  
IV-125  
V-100  
100 EUR to be divided into 25%

10

**Other details on prize money distribution**

Pay by bank transfer – 21 days

CCI2\*-S

TECHNICAL CONDITIONS

DRESSAGE TEST      CCI2\* B  
CCI2\*-S

CROSS-COUNTRY      Length:                      2600-3120 m  
TEST  
CCI2\*-S                      Speed:                      520 m/min  
                                    Number of efforts:                      25-30

JUMPING                      Distance:                      600 m  
CCI2\*-S                      Speed:                      350 m/min  
                                    Max. number of efforts:                      13  
                                    Number of obstacles:                      10-11

PRIZE CLASSIFICATION

Total amount of prize money per      1,000 EUR  
section:                      Base on 60 horses in class, if more than 60 starters prize money will be double.

1000 EUR

(based on 60 horses in class, if more than 60 starters prize money will be double)

I-300

II-225

III-150

IV-125

V-100

100 EUR to be divided into 25%

Other details on prize money distribution

**CCI1\*-INTRO**

**TECHNICAL CONDITIONS**

**DRESSAGE TEST**      CCI1\*  
CCI1\*-Intro

**CROSS-COUNTRY TEST**      **Length:**      2000-3000 m  
CCI1\*-Intro      **Speed:**      500 m/min  
      **Number of efforts:**      25

**JUMPING**      **Distance:**      600 m  
CCI1\*-Intro      **Speed:**      350 m/min  
      **Max. number of efforts:**      12  
      **Number of obstacles:**      10-11

**PRIZE CLASSIFICATION**

---

**Total amount of prize money per section:**      No Prize Money

---

---

**Other details on prize money distribution**

Prizes in kind



## PRIZE MONEY SUMMARY

| Category     | Amount              |
|--------------|---------------------|
| CCI4*-S      | 2,000.00 EUR        |
| CCI3*-S      | 1,000.00 EUR        |
| CCI2*-S      | 1,000.00 EUR        |
| CCI1*-Intro  | 0.00 EUR            |
| <b>Total</b> | <b>4,000.00 EUR</b> |

### IMPORTANT

**The total amount of prize money shown for each Competition in the schedule must be distributed. (FEI General Regulations articles 127 and 128)**

The value of the **1st prize must not exceed 1/3 of the total prize money** distributed for the competition. The minimum number of prizes offered for each competition must be allocated on the basis of one prize for every commenced four Athletes, with a minimum of five prizes.

### DEDUCTIONS FROM PRIZE MONEY AT COMPETITIONS

**Full details of any deductions from prize money must be outlined in the schedule. This includes government taxes. If it is necessary for Organisers to deduct such taxes, they must provide participants with an official form indicating the amount of tax deducted.**

**The tax form must be provided to the athletes upon arrival and returned to the Organiser prior to departing.**

## X. FACILITIES OFFERED

---

### 1. ATHLETES

#### ACCOMMODATION

**Hotel name:** Villa La Pierre

**Address:** Armii Krajowej Street  
58-150 Strzegom Poland

**Telephone:**

Accommodated (bed and breakfast) from **18/08/2021** to **22/08/2021**

At the expense of **Athletes**

#### MEALS

At the expense of **Athletes**

### 2. GROOMS

#### ACCOMMODATION

Requests for accommodation must be sent with entries.

Accommodation will be at the expense of **Athletes**

#### MEALS

Meals at the expense of **Athletes**

Meals provided from **18/08/2021** to **22/08/2021**

On-site Restaurant will be open from 7am until 9pm at grooms expenses

If applicable, Organiser must provide proper sanitary conditions. The showering facilities should be sufficient for both male and female grooms with hot and cold water. Shower facilities as well as restrooms should at all times be in a state of cleanliness.

## XI. LOGISTICAL, ADMINISTRATIVE AND TECHNICAL INFORMATION

### 1. DRAWS

No draws

### 2. COMPETITION ARENAS

|               | Name    | Width (m) | Length (m) | Type of footing/ground |
|---------------|---------|-----------|------------|------------------------|
| Dressage      | ARENA A | 60        | 90         | all weather            |
| Dressage      | ARENA B | 25        | 65         | ALL WEATHER            |
| Dressage      | ARENA C | 20        | 60         | ALL WEATHER            |
| Cross-country |         |           |            | grass/sand             |
| Jumping       | arena A | 60        | 90         | all weather            |

### 3. PRACTICE ARENAS

| Name    | Width (m) | Length (m) | Type of footing/ground |
|---------|-----------|------------|------------------------|
| arena D | 60        | 85         | all weather            |
| arena E | 40        | 110        | all weather            |

### 4. STABLES

Size of boxes

(80% minimum 3m x 3m + 20% 3m x 4m)

### 5. SCORING/TIMING PROVIDER

The Scoring and Timing of the Event will be performed by the following provider:

(The list of certified Service Providers is available here: <https://inside.fei.org/fei/your-role/it-services/it-providers/list>)

Name of the company:

IZMA Kamil Kaczkowski

Contact person at event:

Name:

IzabelaBEK-KACZKOWSKA

FEI ID Number:

10221244

Contact email:

kaczkowska@manes.pl

## **6. OTHER TECHNOLOGY/SERVICE PROVIDER(S)**

Will you use other technology/service provider(s) at your Event? **No**

## **7. PRIZE-GIVING CEREMONY**

The owner of the winning horse/pony is invited to the prize-giving ceremony: **Yes**

The number of athletes required to present themselves for the prize-giving ceremony of each competition is: **3**

Athletes riding their horses: **Yes**

## **8. ADVERTISING ON ATHLETES AND HORSES**

At CI events, and all competitions except for the Nations Cup, athletes are authorised to carry the logo of their personal sponsor in accordance with article 541 of the FEI Eventing Rules.

The Chief Steward will check that the advertising on athletes and horses complies with these Articles.

## **9. TICKETING**

Are you selling tickets for spectators to attend your event? **No**

## **10. BETTING**

Betting will be authorised by the Organiser: **No**

## **11. TRANSPORT REIMBURSEMENT HORSES/PONIES**

-

## **12. WELCOME**

The time and date of arrival of athletes, horses and their means of transport must be given to the Organiser in order to facilitate their arrival.

## **13. LOCAL TRANSPORTATION & ARRANGEMENTS FROM HOTEL TO SHOWGROUNDS**

Walking distance: **Yes**

Organiser shuttle service available: **No**

Public transport available: **Yes, paid by the athlete**

Approximate cost per round trip: **20 EUR**

## **14. LORRY / CARAVAN FACILITIES**

Lorry or caravan can be parked close to the stables: **Yes**

## **15. SUSTAINABILITY**

Please consider the environment when organising an FEI Event. Please find useful information on FEI Sustainability here:  
<http://inside.fei.org/fei/your-role/organisers/handbook>

## **XII. VETERINARY MATTERS**

---

### **1. CUSTOMS FORMALITIES**

Contact details for Customs Formalities:

Not applicable

### **2. HEALTH REQUIREMENTS**

#### **GENERAL**

In accordance with the FEI Code of Conduct for the Welfare of the Horse it is imperative that all Horses at FEI Events are physically fit and free from infectious disease before being allowed to compete.

#### **ENTRY OF HORSES**

##### **Required health tests and vaccinations**

-

##### **Quarantine period**

-

##### **Specimen Import Licence applied**

-

### **3. NATIONAL REQUIREMENTS**

-

### **4. PONIES**

FEI Veterinary Regulations, Chapter IX: For all Pony Events, Ponies must be available for Pony Measurement if requested by the FEI.

### **5. INJURY SURVEILLANCE**

FEI Veterinary Regulations Chapter VIII: Horses participating in FEI Events are subject to injury surveillance protocols; and in the event of fatality, a post mortem examination.

### **6. TRANSPORT OF HORSES**

Horses must be fit to travel and be transported in suitable vehicles for the transport of horses. Any government requirements for disease testing and control must be requested well in advance, to ensure that the horse is in compliance by the time of arrival at the border of the country where the Event is taking place. Athletes, or their representatives, have the responsibility to comply with national legislation in both their country of origin and the host nation of the Event. Where necessary athletes must contact local government authorities or veterinary advisors for information regarding animal health requirements and transport legislation. Within the European Union (EU), this includes EU Council Regulation (EC) No 1/2005 concerning the protection of animals during transport within the Member States of the EU.

## **7. VENUE ARRIVAL INFORMATION & FITNESS TO COMPETE**

### **7.1 PASSPORTS (FEI GENERAL REGULATIONS ARTICLE 137)**

For all issues relating to FEI Horse Passports/FEI Recognition Cards please contact your National Federation. All Horses competing at FEI Events must be registered with the FEI. FEI Passports or FEI Recognition Cards (for those Horses with a national passport approved by the FEI) are compulsory for FEI Events. NB: Horses entered in CIMs and in CSIP in their country of residence are not required to have an FEI Passport or FEI Recognition Card but must be properly registered with the FEI and identifiable (GRs 137.2). Athletes who do not present a Horse's Passport and/or Recognition Card, or one that is not correctly validated or fail to meet other passport requirements will be subject to Sanctions in accordance with Annex VI of the FEI Veterinary Regulations and may not be allowed to compete. NB: for Horses permanently resident in a Member State of the European Union: all Horses must have a national EU passport in compliance with EU Regulations to which a FEI Recognition card is applied. The exception to this being Horses in possession of an FEI passport which has been continually revalidated without interruption.

### **7.2 VACCINATIONS - EQUINE INFLUENZA (FEI VETERINARY REGULATIONS ARTICLE 1003)**

Horses competing at FEI Events must comply with the requirements for Equine Influenza vaccination in accordance with the Veterinary Regulations and as summarised below.

| <b>Vaccination</b> | <b>Protocol</b>  | <b>Eligibility to enter venue</b>   |
|--------------------|--|---|
| Primary course     | 1st Vaccination: day 0<br>2nd Vaccination: day 21-92   | May compete 7 days after the 2nd Vaccination  |
| First booster      | Within 7 months of the 2nd vaccination of the Primary Course   | May compete for 6 months +21 days after the 2nd vaccination of the Primary Course<br>Must not compete in the 7 days after receiving a vaccination |
| Boosters           | <b>MINIMUM:</b> within one year of previous booster vaccination<br><b>IF COMPETING:</b> must be in the 6 months +21 days of the booster previous vaccination | Must have been vaccinated within 6 months +21 days before arriving at the Event<br>Must not compete in the 7 days after receiving a vaccination   |

All FEI registered Horses intending to compete at FEI Events (including CIMs) must be vaccinated against Equine Influenza in accordance with these VRs. The exception being if the applicable domestic legislation prevents the use of Equine Influenza vaccines within the relevant territory.

### **7.3 EXAMINATION ON ARRIVAL (FEI VETERINARY REGULATIONS ARTICLE 1031)**

On arrival at an Event venue, all Horses must undergo an examination by a veterinarian to confirm their identification from their passport and micro-chip ID (where present), their vaccination status and general health. To protect all horses attending events, any Horse with a questionable health status concerning vaccination, disease or other concerns, must be stabled within the isolation facilities provided by the Organising Committee pending a decision on entering the venue.

#### **7.4 HORSE INSPECTIONS (FEI VETERINARY REGULATIONS ARTICLES 1034-1042)**

All Horses will be assessed for their fitness to compete during the Horse Inspection. Any Horse demonstrating questionable fitness may be referred to the Holding Box for further veterinary examination. Horses not deemed fit to compete by the Inspection Panel will not be permitted to compete.

#### **7.5 LIMB SENSITIVITY EXAMINATION (FEI VETERINARY REGULATIONS ARTICLE 1048-1053)**

All Horses are subject to examination under the protocol for abnormal limb sensitivity throughout the period of an Event, including, but not limited to, between rounds and before the Jump Off. Horses may be examined once or on multiple occasions during the Period of an Event. Horses may be selected for examination under the protocol randomly or they may be targeted. All Horses selected to be tested must submit promptly to the examination or are subject to immediate disqualification. There is no obligation to examine any specific number of Horses at an Event.

### **8. EQUINE ANTI-DOPING AND CONTROLLED MEDICATION PROGRAMME (EADCMP)**

#### **8.1 SAMPLING (FEI VETERINARY REGULATIONS CHAPTER VII)**

All horses competing at FEI Events may be subject to sampling for the presence of Prohibited Substances in accordance with the Anti-Doping and Controlled Medication Regulations (EADCMRs). Horses may be selected for sampling in accordance with obligatory testing, targeted or random sampling procedures. Refer to FEI Financial Charges for details of fees relating to Equine and Human Anti-Doping program (EADCMP), which OCs/NFs have the right to charge to the athlete (applicable for all FEI events worldwide).

#### **8.2 ELECTIVE TESTING (FEI VETERINARY REGULATIONS ARTICLES 1057 AND 1058)**

Elective Testing may be carried out prior to an Event to check for the presence of prohibited substances. Please refer to <https://inside.fei.org/fei/cleansport/horses> for information and details.

## **XIII. HUMAN ANTI-DOPING**

---

Athletes can be tested at any FEI Event, by the FEI or by other Anti-Doping Organisations with Testing jurisdiction. Organisers will have the responsibility to provide facilities and staff/volunteers to facilitate such Testing if requested by the FEI as outlined in article 22.3 of the FEI's Anti-doping Rules for Human Athletes (ADRHA).

The ADRHA rules are published on the FEI's website at <http://inside.fei.org/content/anti-doping-rules>.



## XIV. ADDITIONAL INFORMATION

### 1. THE FEI POLICY FOR ENHANCED COMPETITION SAFETY DURING THE COVID-19 PANDEMIC

The FEI Policy for Enhanced Competition Safety during the Covid-19 Pandemic ("Policy") (<https://inside.fei.org/fei/covid-19/return-to-play/policy-tools>) is mandatory and applies for any FEI Event taking place **as of 1 July 2020**. The Policy has been developed based on currently accepted best practices by the WHO and US Center for Disease Control (CDC) and will be continually reviewed and updated as more information becomes available. It is not intended to replace the applicable guidance and policies from domestic government and health authorities, but to supplement their recommendations with sport specific considerations.

The OC shall submit the risk assessment and mitigation plan (including name and contact details of the person in charge) to the FEI as an annex to the Event Schedule, **at the latest ten (10) working days before the event's deadline for Definite Entries**.

Events for which the FEI has not received the documented risk assessment and mitigation measures plan in accordance with article 2.1.g) of the Policy **will be removed from the FEI calendar** in accordance with Article 112.3 of the FEI General Regulations.

#### ASSUMPTION OF RISK / WAIVER OF LIABILITY

In consideration of being allowed to participate in the Event and related activities, all Participants (as defined in the Policy) acknowledge, appreciate, and agree that:

1. Participation includes possible exposure to and illness from infectious diseases including but not limited to COVID-19. While particular rules and personal discipline may reduce this risk, the risk of serious illness and death does exist; and,
2. The Participants knowingly and freely assume all such risks, both known and unknown, even if arising from the negligence of the OC or others, and assume full responsibility for their participation; and,
3. The Participants willingly agree to comply with the stated and customary terms and conditions for participation as regards protection against infectious diseases. If, however, a Participant observes any unusual or significant hazard during his/her presence or participation, the Participant will remove himself/herself from participation and bring such to the attention of the nearest official immediately; and,
4. The Participants, for themselves and on behalf of their heirs, assigns, personal representatives and next of kin, HEREBY RELEASE AND HOLD HARMLESS THE OC AND THE FEI, their officers, officials, agents, and/or employees, other participants, sponsoring agencies, sponsors, advertisers, and if applicable, owners and lessors of premises used to conduct the event ("RELEASEES"), WITH RESPECT TO ANY AND ALL ILLNESS, DISABILITY, DEATH, or loss or damage to person or property, WHETHER ARISING FROM THE NEGLIGENCE OF RELEASEES OR OTHERWISE, to the fullest extent permitted by law.

The Participants confirm to have read this release of liability and assumption of risk agreement, fully understand its terms, understand that they have given up substantial rights.

### 2. MEDICAL INFORMATION FORM FOR ARMBANDS

#### Declaration of medical condition

Athletes with medical conditions that may be relevant in the case of a medical emergency are responsible, at every Event when riding, for wearing a medical data carrier\* from a system provider able to communicate information at least in English. Alternatively (and at the minimum) a medical armband of good quality can be used. Athletes who chose to wear an armband should download and fill the form available for this purpose on the FEI's website <http://inside.fei.org/fei/your-role/officials/eventing/forms>.

*\* Medical data carrier (also called "medical identification tag"): small emblem or tag worn on a bracelet, neck chain, or on the clothing, intended to alert paramedics/physicians/ first responders that the wearer has an important medical condition.*

Conditions that are relevant include recent head injury, serious past injuries/surgery, chronic health problems such as diabetes, long-term medications and allergies. If in doubt, the athlete should discuss this with his own treating physician."

### **3. INSURANCES AND NATIONAL REQUIREMENTS**

Equestrian sports involve inherent dangerous risks. To the greatest extent permitted by law, the FEI and the FEI Event Organiser shall NOT be liable for any damages relating to loss of property or injury of any kind to Athletes, Owners, Support Personnel or Horses at or in connection with an FEI Event and the FEI expressly excludes all such liability.

#### **3.1 ATHLETES, OWNERS AND SUPPORT PERSONNEL**

##### **3.1.1 Personal accident and health insurance**

It is your responsibility as an Athlete/Owner/ Support Personnel to ensure that you have adequate personal accident insurance in place to cover your participation at FEI Events and in particular to insure against any personal injury or medical expenses arising from an accident, injury or illness which may occur at a FEI Event.

You should check with your National Federation to confirm if your National Federation's insurance policy (if any) covers personal accidents and/or illnesses, which may occur when you are attending at/participating in FEI Events.

If your National Federation does not have a personal accident/health insurance policy or if the National Federation's insurance policy does not cover personal accident or health claims, then you should obtain your own personal accident and health insurance policy to cover your attendance/participation at FEI Events.

##### **3.1.2 Press equipment**

Press equipment and other items left in the Press workroom, Press lockers, the Press Tribune or anywhere on the showgrounds are left entirely at the owner's risk. The Organising Committee does not accept any responsibility for any loss or damage to such equipment or items. Members of the Press are advised not to leave any equipment or personal items unattended.

##### **3.1.3 Personal property insurance**

You should also ensure that you are insured against property loss, theft or damage, which may occur at an FEI Event.

Again, the advice is to check with your National Federation to confirm if they have an insurance policy in place, which would cover you in case of such property loss, theft or damage. If not, then you should obtain your own personal property insurance to cover such situations.

#### **3.2 ATHLETES AND OWNERS**

##### **3.2.1 Third party liability insurance**

As an Athlete/Owner you are personally responsible for damages to third parties caused by you, your employees, Support Personnel, your agents or your Horses. You are, therefore, strongly advised to take out third-party liability insurance providing full coverage in relation to FEI Events at home and abroad, and to keep the policy up to date.

The FEI and the Organiser will NOT be responsible for any damage caused to third parties by you, your employees, Support Personnel, your agents or your Horses.

##### **3.2.2 Additional liability information**

No additional information

##### **3.2.3 Horse insurance**

As an Owner you should ensure that your Horses are adequately insured against any injuries or illnesses they may sustain

while participating at a FEI Event.

#### **4. PROTESTS / APPEALS**

To be valid, all Protests and Appeals must be made in writing and accompanied by a deposit of CHF 150.- or equivalent.

Protest and appeal forms are available on the FEI website:

**Protests:** <http://inside.fei.org/sites/default/files/FEI%20Protest%20Form.pdf>

**Appeals:** <http://inside.fei.org/sites/default/files/FEI%20Appeal%20Form.pdf>

#### **5. DISPUTES**

In the event of any discussion concerning the interpretation of the schedule (in translated languages), the English version will be decisive.

#### **6. MODIFICATION TO SCHEDULE**

In exceptional circumstances, together with the approval of Chefs d'Equipe, host NF delegate, if any, and the Ground Jury, the Organiser may change the schedule in order to clarify any matter arising from an omission or due to unforeseen circumstances. Any such changes must be notified to all athletes and officials as soon as possible and they must be reported to the FEI Secretary General by the Technical Delegate.

#### **7. ADDITIONAL INFORMATION FROM THE ORGANISER**

No additional information

#### **8. MINIMUM AGE LIMITATION**

| Level   | Athletes | Horses |
|---------|----------|--------|
| 1*      | 12       | 5      |
| 2*      | 14       | 6      |
| 3*      | 16       | 6      |
| 4*      | 18       | 7      |
| 5*+CH4* | 18       | 8      |

#### **9. PRIZE MONEY DISTRIBUTION**

##### **IMPORTANT**

**The total amount of prize money shown for each Competition in the schedule must be distributed. (FEI General Regulations articles 127 and 128)**

The value of the **1st prize must not exceed 1/3 of the total prize money** distributed for the competition. The minimum number of prizes offered for each competition must be allocated on the basis of one prize for every commenced four Athletes, with a minimum of five prizes.

##### **DEDUCTIONS FROM PRIZE MONEY AT COMPETITIONS**

Full details of any deductions from prize money must be outlined in the schedule. This includes government taxes. If it is necessary for Organisers to deduct such taxes, they must provide participants with an official form indicating the amount of tax deducted.

The tax form must be provided to the athletes upon arrival and returned to the Organiser prior to departing.

## **XV. ANNEXES**

---

### **1. STEWARDING**

If an athlete is uncertain as to whether the boots he/she intends to use during an event are allowed, he/she or his/her representative should show the boots to the Chief Steward for his/her opinion before the boots are used in training or in competition.

In addition, athletes are to be made aware that hind boots must be removed and placed again on the horse's legs in the presence of a Steward while in the warm-up arena prior to entering the competition arena for certain competitions. (If bandages are used in place of boots, athletes are not required to remove the bandages in the warm-up arena.) This procedure is compulsory for competitions for which boot and bandage control is mandatory, that is the Nations Cup, Championships, and the competition with the highest prize money, and is at the discretion of the Chief Steward for other competitions.

As an alternative to carrying out this procedure at the time designated by the Steward an athlete may ask his/her groom to take the boots to the in-gate and place them on the horse's legs in front of the Steward prior to the combination entering the arena.

The Steward has the authority to intervene if a boot is deemed excessively tight by instructing that the boot be removed and put on again correctly. [Stewards are to note that it is normal for a horse's gait to be somewhat affected immediately after boots have been removed and re-placed.] If an athlete or his/her groom refuses to remove and re-place the boot(s) when instructed to do so by the Steward, a Yellow Warning Card will be issued to the athlete in question.

If it is deemed impossible or unsafe to remove the hind boots in the warm-up arena prior to the combination entering the competition arena, due to an extremely excited or nervous horse, the boots of the horse in question are to be removed by the athlete/groom following the athlete's round upon leaving the arena and inspected by the Steward. This inspection may be carried out during the boot and bandage control if the boot and bandage control is carried out for the competition in question.

This procedure does not replace boot and bandage control after completion of an athlete's round for competitions for which boot and bandage control is mandatory (refer to JRs Art. 244.1)