

# STRAGONA EQUESTRIAN CENTER



## STRZEGOM SPRING OPEN HORSE ARRIVAL PROTOCOL

**ARRIVAL TIME:**

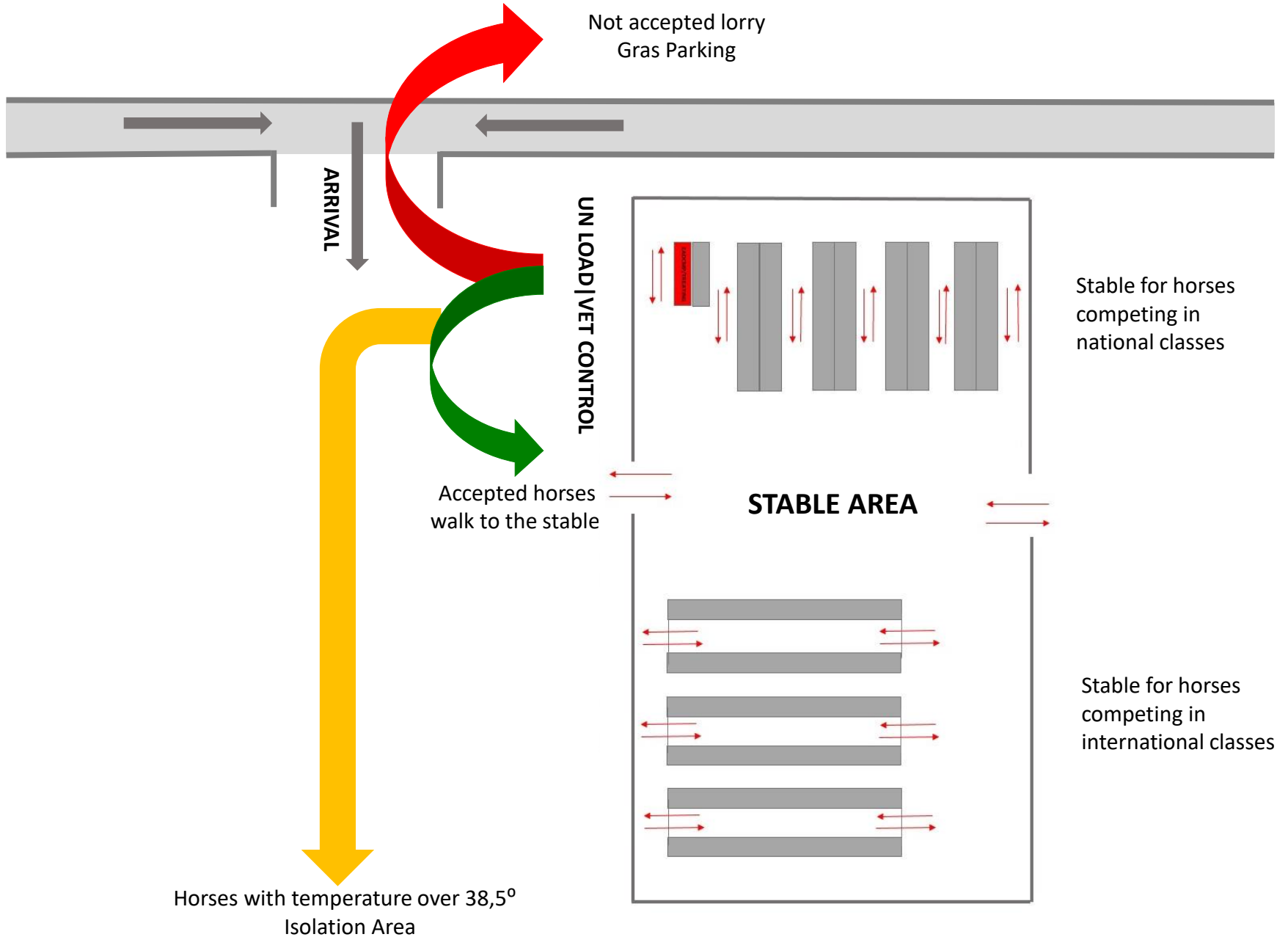
**WEDNESDAY: 12.00-19.00**

**THURSDAY: 7.00-19.00**

**THERE IS NOT POSSIBILITY TO ARRIVE AT OTHER TIME**

**Please ensure that you start travel from home with sufficient time  
to avoid late arrival !!!**

# STRAGONA EQUESTRIAN CENTER



# STRAGONA EQUESTRIAN CENTER

In reference to the FEI regulations about the arrangement of horses in stables, competitors who take part in both competitions – international and national – and want their horses to stay in one stable are obliged to register in FEI a horse participating in national competitions before the deadline for the entries. They are obliged to comply with all phytosanitary recommendations as well as for horses competing in international competitions, including the FEI HORSE APP.

## DOCUMENTS REQUIRED FOR VET CONTROL

- **HORSE PASSPORT**

- **TRACES CERTIFICATE /FOR HORSES COMING FROM ABROAD ONLY/**

Please inform your official veterinarian that when preparing the documents in the TRACES system, the trace number will be generated automatically after selecting the organiser: LKS Stragona.

**Organiser ID: PL-02194401-LKS**

**!!! Please ensure the correct address is used: Morawa 36, 58-150 Strzegom !!!**

- **EQUINE HEALTH SELF-CERTIFICATION, EQUINE INFLUENZA VACCINATION & TEMPERATURE RECORDING**

**Horse Health Status Self-declaration including Equine influenza vaccination details and horse rectal temperatures for the 3 days before arrival to the event,**

**ALL ENTERED IN THE FEI HORSEAPP**

# STRAGONA EQUESTRIAN CENTER

## HORSE ARRIVAL PROCEDURE

Prior to arrival: Athlete/Groom announce their arrival time in advance



On arrival: **Check Point – Vet Team:** Stables allocation  
All horse passports collected by Vet Team  
(identify all horses from the same truck and keep passports together)



Unloading of horses from the truck. Athlete/Groom takes the horse's temperature at the Check Point under the surveillance of an FEI Veterinarian assigned by the Veterinary Delegate (VD).

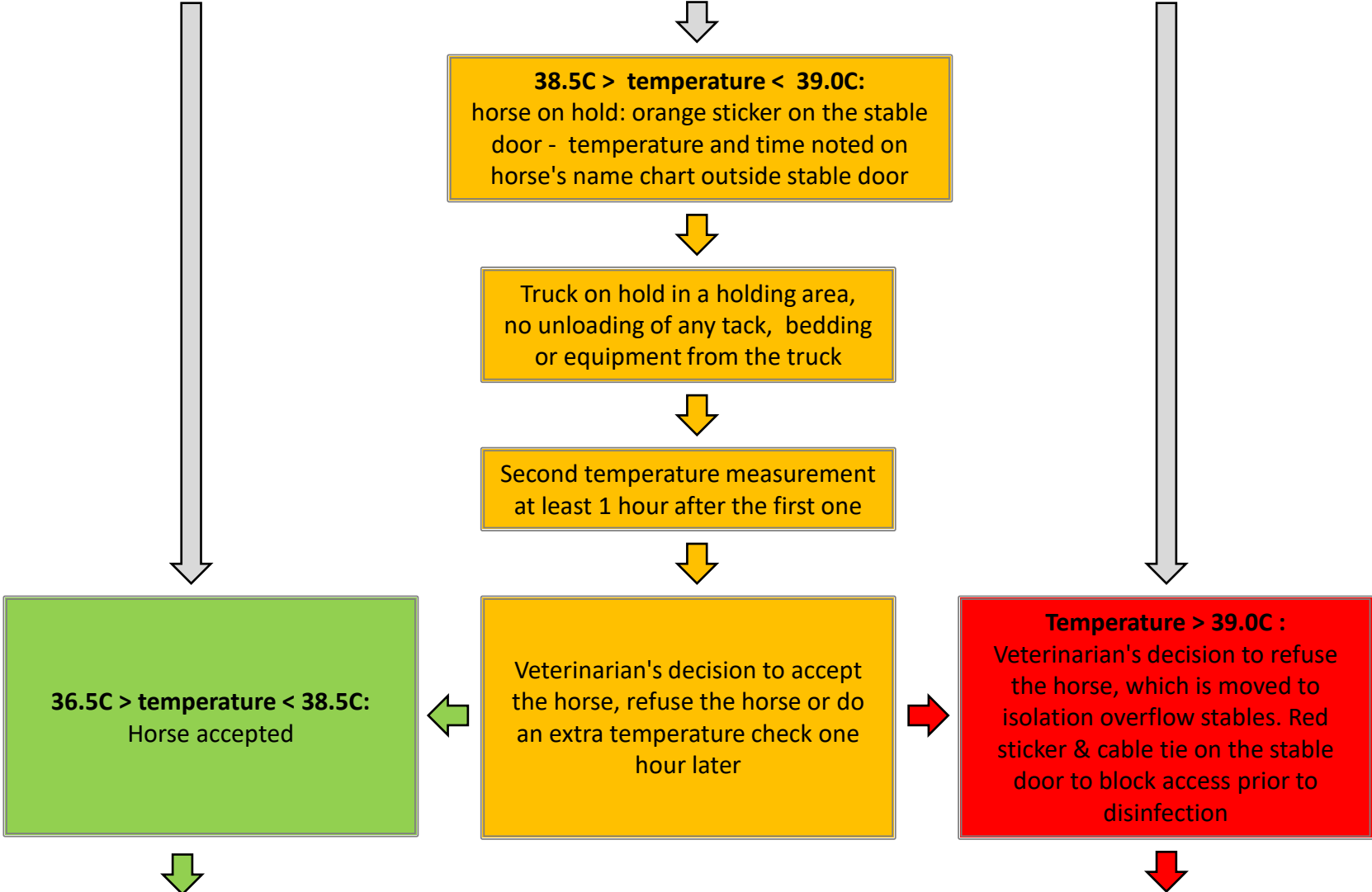
**FEI Veterinarian scans the horse's microchip to establish ID (using Bluetooth microchip reader & FEI HorseApp), checks for any other signs of infectious disease and equine influenza vaccinations (as indicated by FEI Veterinary Regulations) and records the horse's temperature in the FEI HorseApp.**

**NO HORSE ALLOWED TO LEAVE THE CHECK POINT UNTIL A CORRECT TEMPERATURE MEASUREMENT IS RECORDED.**



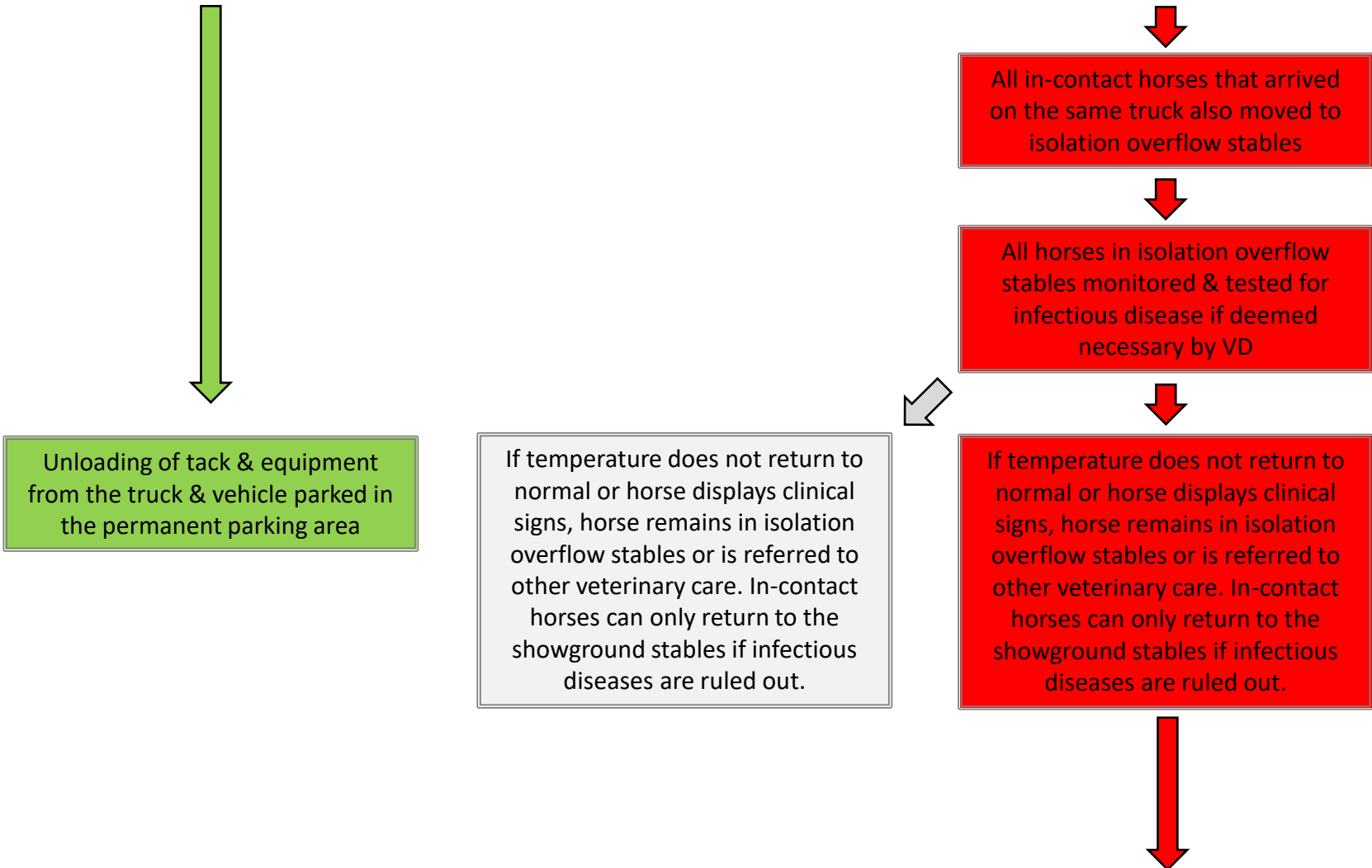
# STRAGONA EQUESTRIAN CENTER

## HORSE ARRIVAL PROCEDURE



# STRAGONA EQUESTRIAN CENTER

## HORSE ARRIVAL PROCEDURE



Unloading of tack & equipment from the truck & vehicle parked in the permanent parking area

If temperature does not return to normal or horse displays clinical signs, horse remains in isolation overflow stables or is referred to other veterinary care. In-contact horses can only return to the showground stables if infectious diseases are ruled out.

All in-contact horses that arrived on the same truck also moved to isolation overflow stables

All horses in isolation overflow stables monitored & tested for infectious disease if deemed necessary by VD

If temperature does not return to normal or horse displays clinical signs, horse remains in isolation overflow stables or is referred to other veterinary care. In-contact horses can only return to the showground stables if infectious diseases are ruled out.